



MASTER PRICE LIST
with **SIZING CHARTS**
July 1, 2009



SOLARMOUNT



SUNFRAME



RAPIDRAC G10

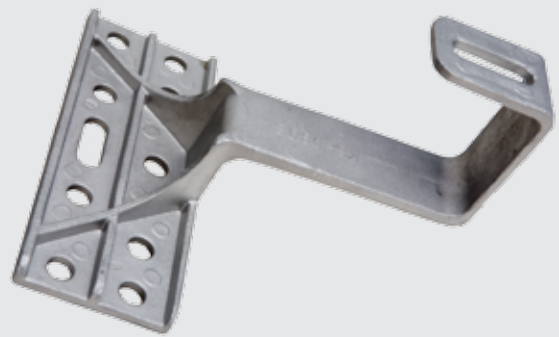


UNIRAC LARGE ARRAY (U-LA)



POLEMOUNT

Creotecc Roof Tile Hook **NEW!**



Page 53 for details!

Introduction

Thank you for choosing Unirac's PV mounting solutions. Select the configuration checklist best suited for your installation, use the sizing charts to determine your part numbers and find your price using our price lists.

Price and specifications are subject to change without notice. However, Unirac strives to maintain open communications with you, our most valued partner. In most cases, newsletters are sent out by e-mail 30 days in advance of any part number or pricing changes. **Please make sure your server and/or e-mail software is set up to receive e-mails from any address at unirac.com.**

Unirac welcomes input concerning the accuracy and user-friendliness of this publication. Please send any suggestions to marketing@unirac.com.

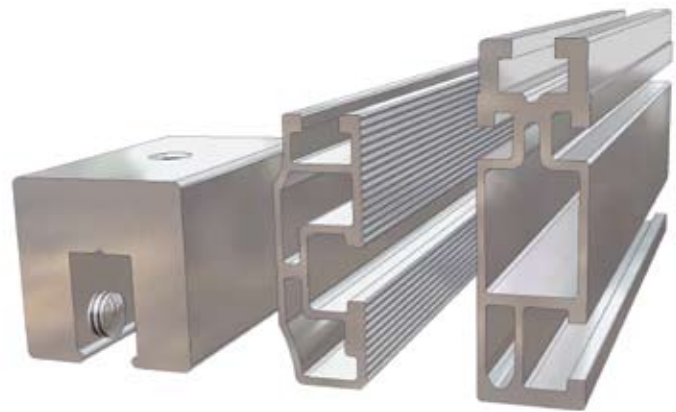
Table of Contents

SOLARMOUNT		POLEMOUNTS	
Components and Configurations	4-5	PV PoleTop Design Wind Pressure	35
Top Mounting Sizing Charts	6-8	PV PoleTop Components and Configurations	36
Bottom Mounting Sizing Charts	9-11	PV PoleTop Sizing Charts	36-39
Rail Price Lists	12-18	PV PoleTop Price Lists	40-41
Accessories	19-21	PV PoleTop Accessories	42
Tilt Leg	22-23	PV PoleSides Adjustable Tile Configurations	42
Top and Bottom Mounting	24-27	PV PoleSides Adjustable Tilt Sizing Charts	45
		PV PoleSides Adjustable Tilt Price Lists	44-45
RAPIDSTOCK BULK ORDERING PROGRAM	28	PVPoleSides Fixed Tilt Sizing Charts	46
		PV PoleSides Fixed Tilt Price Lists	46
SUNFRAME		SPECIALTY RACKS	
Components and Configurations	29	Price Lists	47
Rail Price Lists	29		
Accessories	30-31	ATTACHMENTS	
		Standoffs	48-49
RAPIDRAC G10		Flashings	49
Price Lists	32	L-Foot	50
Components and Configurations	33	FastFoot	50
RapidFoot Attachment Option	33	S-5	51-52
		Roof Tile Hook	53
UNIRAC LARGE ARRAY (U-LA)			
Price Lists	34		

SOLARMOUNT

Components and Configurations

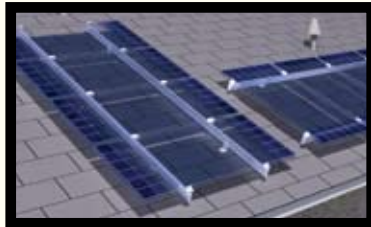
Thanks for using SolarMount. Select the configuration checklist best suited for your installation.



SOLARMOUNT
S-5!

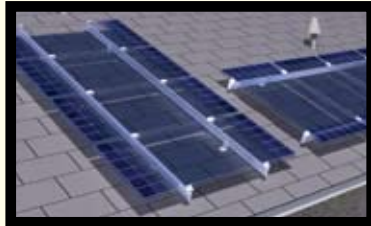
SOLARMOUNT
LIGHT RAIL

SOLARMOUNT
STANDARD RAIL



LIGHT RAIL, FLUSH MOUNT

Easy handling light rail saves aluminum and expense without compromising structural integrity. Install an array flush to a roof or other mounting surface with footings up to 48 inches apart. Mount in high profile (rails parallel to rafters) or low. Accessories handle special circumstances, such as Spanish tile or an uneven roof.



STANDARD RAIL, FLUSH MOUNT

Where foot spacing must exceed 48 inches, standard rail provides the extra strength. Install an array flush to a roof or other mounting surface in high profile (rails parallel to rafters) or low. Accessories handle special circumstances, such as Spanish tile or an uneven roof.



STANDARD RAIL, LOW PROFILE TILT LEGS

Minimize the vertical height of your array—to hide an array behind a parapet, for example. You can also optimize tilt angle on a pitched roof to maximize system performance. Tilt angle depends on leg length and the make and model of your PV modules. Use standard rail with all tilt legs.



STANDARD RAIL, HIGH PROFILE TILT LEGS

Maximize module density at a given site area on the ground or on a flat or pitched roof. Tilt angle depends on leg length and rail length. Use standard rail with all tilt legs.

High profile legs require unspliced rails not exceeding 180 inches.



S-5 STANDING-SEAM METAL ROOF CLAMPS

SolarMount/S-5! secure PV modules to a standing-seam metal roof easily and inexpensively without penetrating the roof. Rails are not required, but can be used for special applications.

TOP MOUNTING CLAMPS

Select top mounting clamps if you prefer to install modules after securing the footings and the rails. This sequence is especially well suited for flush mounting.

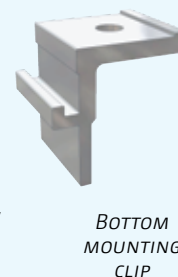
Top mounting clamps do not use module mounting holes, thus allowing flexibility in rail placement. See the installation manual for details. Top mounting requires 1 inch between modules. Rails must extend 1½ inches beyond the last module on each end.



BOTTOM MOUNTING CLIPS

Select bottom mounting clips if you plan to attach modules to rails prior to final installation, a sequence well suited for pre-wired rows of modules. No space between modules is required, and rails need not extend past the end modules.

Cautions: (1) Module mounting holes determine spacing of the rails. If rails are parallel to rafters, stringers will likely be necessary under the roof since footings must attach to structural members, not decking alone. (2) Flush arrays are significantly more difficult to install when using bottom mounting clips because of access problems when securing footings. Use bottom mounting clips with flush mounts only if the PV modules you are installing have mounting holes near the ends.



Light Rail, Flush Mount, Clamps: Checklist

- Sizing: Rails and clamps, pp. 6–8
- Kit pricing: Light rail kits, pp. 17–18; clamp kits, pp. 24–27
- Pro-Pak pricing: Light rails, p. 15; L-feet, p. 52; clamps, pp. 24–27
- Light rail splices, grounding clips, and grounding lugs, pp. 19–21
- Standoffs and flashings, pp. 50–51.
- Accessories: hanger bolts, cable ties, shims, security hardware, p. 20

Standard Rail, Flush, Clamps: Checklist

- Sizing: Rails and clamps, pp. 6–8
- Kit pricing: Standard rail kits, p.13-14; clamp kits, pp. 24–27
- Pro-Pak pricing: Standard rails, p. 13; L-feet, p. 52; clamps, pp. 24–27.
- Rail splices, grounding clips, and grounding lugs, p. 19–21
- Standoffs and flashings, pp. 50–51
- Accessories: hanger bolts, cable ties, shims, security hardware, pp. 19–20

Flush Mount, Clips: Checklist

- Sizing: Rails and clamps, pp. 9–11.
 - Kit pricing: Standard rail kits, p.13-14; clips, p. 27.
 - Pro-Pak pricing: Standard rails, p. 13; L-feet, p. 52; clips, p.27
 - Rail splices, grounding clips, and grounding lugs, p. 19–21
 - Standoffs and flashings, p. 50–51.
 - Accessories: Cable ties, shims, and security hardware, p. 20
- See Cautions 1 and 2 above. Consult Unirac before using aluminum standoffs or hanger bolts in this configuration.

Low Profile Tilt Legs, Clamps: Checklist

- Same as "Standard Rail, Flush, Clamps", plus:
- Sizing: Tilt angles, p. 23, and L-feet required, p. 23.
 - Pricing: Low profile tilt legs, p 23
- Consult Unirac before using aluminum standoffs or hanger bolts in this configuration.

Low Profile Tilt Legs, Clips: Checklist

- Same as "Standard Rail, Flush, Clips", plus:
- Sizing: Tilt angles, p. 23, and L-feet required, p23
 - Pricing: Low profile tilt leg, p 23.
- Requires mounting holes at ends of modules. Consult Unirac before using aluminum standoffs or hanger bolts in this configuration.

High Profile Tilt Legs, Clamps: Checklist

- Same as "Standard Rail, Flush, Clamps", plus:
- Sizing: Tilt angles, p. 22.
 - Pricing: High profile tilt legs, p. 22.
- Do not use splices with this configuration. Consult Unirac before using aluminum standoffs or hanger bolts.

High Profile Tilt Legs, Clips: Checklist

- Same as "Standard Rail, Flush, Clamps", plus:
- Sizing: Tilt angles, p. 22.
 - Pricing: High profile tilt legs, p. 22.
- Do not use rail splices with this configuration. Consult Unirac before using aluminum standoffs or hanger bolts.

SolarMount®/S-5!™: Checklist

- Sizing: Clamp sets, pp. 53–54
- Pricing: Clamp sets, pp. 53–54
- Clamp sets with L-feet for use with rails (p. 54).

SOLARMOUNT



Top Mounting

Size installations using top mounting clamps with SolarMount® light or standard rails

Sizing can take place as soon as you know the make, model, and number of modules you plan to mount. Call Unirac for modules not listed. When sizing is complete, rails, clamps, splices, and L-feet may be ordered in either of two ways:

- Kits (pp. 13–14) contain just the right component quantities for a given installation.
- Pro-Pak pricing (p. 13) offers bulk components, best for installers who regularly use SolarMount.

Required rail lengths (inches) and top mounting clamp sizes

Module make and model	Clamp size	Number of modules to be mounted per row										
		2	3	4	5	6	7	8	9	10	11	12
BP Solar												
BP365	E	48	72	96	106	132	156	180	192	216	240	252
BP380, -485	E	48	72	96	120	144	168	180	204	226	252	276
BP3125	E	60	96	120	144	168	204	226	252	288	312	336
BP3150, -3160, -4175	E	72	106	132	168	204	240	264	300	324	360	396
BPSX160B, -170B	E	72	106	132	168	204	240	264	300	324	360	396
Canadian Solar												
CS5F-12, CS5E-15, CS5E-18, CS5E-20	A	36	48	60	72	84	96	106	120	132	144	156
CS6D-60, CS6D-65	C	60	84	120	144	168	204	228	252	276	312	336
CS5C-80, CS5C-90	C	48	72	96	120	144	168	192	216	228	252	276
CS5A-160, CS5A-170, CS5A-180	D	72	106	144	168	204	240	264	300	336	360	396
CS6A-160, CS6A-170, CS6P-170, CS6A180, CS6P-180, CS6P-190, CS6P-200, CS6P-210, CS6P-220, CS6P-230, CS6P-240	K	84	132	168	204	252	288	324	360	408	444	480
CS5P-200, CS5P-210, CS5P-220, CS5P-230, CS5P-240	D	96	132	180	216	264	312	348	396	432	480	516
Evergreen												
EC-110-GL, EC-115-GL, EC-120GL	C	60	84	120	144	168	192	216	252	276	300	324
ES-170, ES-180, ES-190, ES-195	K	84	120	156	204	240	276	312	360	396	432	468
ES-A-190, ES-A-195, ES-A-200, ES-A-205, ES-A-210	F	84	120	156	204	240	276	312	360	396	432	468
GE Energy												
GEPV072, -085	C	48	72	96	120	144	156	180	204	226	252	264
GEPV100, -110	C	60	84	120	144	168	192	226	252	276	300	336
GEPVp130	C	60	84	120	144	168	204	226	252	276	312	336
GEPV173	C	84	132	168	204	240	288	324	360	396	-	-
GEPVp185, -200	C	84	132	168	204	240	288	324	360	408	-	-
Isotofón												
I-100	D	60	84	120	144	168	192	216	252	276	300	324
I-150S	D	96	132	180	216	264	300	348	384	432	-	-
I-165	D	84	120	168	204	240	288	324	360	396	-	-

Required rail lengths (inches) and top mounting clamp sizes (continued)

Module make and model	Clamp Size	Number of modules to be mounted per row										
		2	3	4	5	6	7	8	9	10	11	12
Kaneka												
G-EA060, G-SA060	D	84	132	168	204	252	288	324	372	408	-	-
Kyocera												
KC40T, KC50T, KC65T, KC85T, KC85TS, KCI30GT, KCI30TM	C	60	84	120	144	168	192	216	252	276	300	324
KDI30GX-LP, KDI35GX-LP	C	60	84	120	144	168	204	228	252	276	312	336
KCI75GT, KDI80GX-LP, KC200GT, KD205GX-LP, KD210GX-LP	C	84	132	168	204	252	288	324	372	408	444	492
Mitsubishi												
PVMFI10EC3, -120EC3	F	60	84	120	144	168	192	216	240	276	300	324
PVMFI25EA2LF, -130EA2LF	F	72	106	144	168	204	240	264	300	336	372	396
PVMFI65EB3	F	72	106	132	168	204	240	264	300	336	360	396
Photowatt												
PW750	A	48	72	96	120	144	168	192	216	240	264	288
PWI650	D	96	144	180	226	264	312	360	396	-	-	-
Schott Solar												
ASE300, -315, -330	E	106	168	216	264	312	372	420	-	-	-	-
Sanyo												
HIP190BA3, -195BA3, -200BA3,	H	84	120	156	180	216	252	288	324	360	396	432
HIT-xxx/HIP-xxxDA3	L	84	120	156	192	228	264	300	336	360	408	*
Sharp												
ND-070ELU, ND-070ERU, ND-072ELU, ND-072ERU, ND-72ELUF, ND-72ERUF	F	84	132	168	204	252	288	324	372	408	444	492
ND-162UI & UIF, ND-167UIF, ND167U3 & U3A	F	84	132	168	204	252	288	324	372	408	444	492
ND-187UI & UIF, ND-198UIF	N/A	84	132	168	204	252	288	324	372	408	444	492
ND-200UI & UIF, ND-205UI, ND-208UI & UIF & U2, ND-216UIF & U2	F	84	132	168	204	252	288	324	372	408	444	492
ND-60RUI, ND-62RUI & RU2	C	36	60	72	96	106	120	144	156	168	192	204
ND-123-UJF, ND-L3EJE, ND-L3EJEA	F	60	84	120	144	168	192	228	252	276	300	336

Required rail lengths (inches) and top mounting clamp sizes

Module make and model	Clamp size	Number of modules to be mounted per row										
		2	3	4	5	6	7	8	9	10	11	12
ND-N0ECU, ND-N2ECU, ND-N2ECUF	F	84	132	168	204	252	288	324	372	408	444	492
NE-170U1-VE, NT-175U1-VE, NT-180U1-VE	F	72	106	144	180	204	240	276	312	348	372	408
Sharp (continued)												
NE80-EJE, NE-80EJEA	F	48	72	96	120	144	168	180	204	228	252	276
ND-200U1F-VE (& U1-VE), ND-205U1-VE, ND-208U1F (& U1-VE & U2-VE), ND-216U1F-VE (& U2-VE), ND-220U1F (& U1F-VE, U2 & U2-VE), ND-224U1F (&U1F-VE, U2 & U2-VE)	F	84	132	168	204	252	288	324	372	408	444	492
NE-160U1, NE-170U1, NT-175U1, NT-180U1	F	72	106	144	180	204	240	276	312	348	372	408
NE-165U1 (& U5)	F	72	106	144	180	204	240	276	312	348	372	408
SolarWorld (Shell)												
80P, 85P, SP75, SQ80	C	48	72	96	120	144	156	180	204	226	252	264
165P, -PC; 175P, -PC; SQ165	D	72	106	144	168	204	240	276	300	336	372	408
SunPower												
SPR90, -95	F	48	72	96	120	144	156	180	204	226	252	264
SPR200BLK, -210, -215BLK, -220	F	72	106	132	168	204	240	264	300	336	360	396
Suntech												
STP060-12/Sb	B	60	84	106	132	168	192	216	240	264	288	324
STP085S	B	48	72	96	120	144	168	192	204	226	252	276
STP110-12Tb; STP115-12Tc; STP120, -130, -140	C	60	96	120	144	168	204	226	252	288	312	336
STP110-24Ab, STP175-24Ab1	C	72	106	144	168	204	240	276	300	336	372	396
SunWize												
SW50A, SW55A, SW60A	C	60	84	106	120	144	168	192	216	240	264	288
SW50C, SW55C, SW60C	C	48	72	96	106	132	156	168	192	216	240	252
SW75A, SW80A	C	60	84	106	132	156	180	204	228	252	276	300
SW90C, SW100C	C	48	72	96	120	144	168	192	216	228	252	276
SW150	J	72	96	132	168	192	228	264	284	324	348	384
SW170, SW175, SW180	J	72	106	144	168	204	240	276	300	336	372	396
UniSolar												
ES62T	B	72	106	132	168	204	240	264	300	324	360	396
US64	B	72	96	132	156	192	216	252	276	312	336	372
Yingli												
YL80, -85	C	48	72	96	120	144	168	192	204	226	252	276

SOLARMOUNT

BOTTOM MOUNTING CLIP



Bottom Mounting

Size installations using bottom mounting clips with SolarMount® standard rails

Sizing can take place as soon as you know the make, model, and number of modules you plan to mount. Call Unirac for any modules not listed. When sizing is complete, rails, splices, and L-feet may be ordered in two ways:

- Kits (p. 13-14) contain just the right quantities for a given installation.
- Pro-Pak pricing (p. 13) offers bulk components, best for installers who regularly use SolarMount.

Order 4 bottom mounting clips (p. 27) for every module to be mounted.

Required rail lengths (inches) for bottom mounting

Module make and model	Number of modules to be mounted per row										
	2	3	4	5	6	7	8	9	10	11	12
AEE											
AE80J	48	72	96	120	132	156	180	192	216	240	264
BP Solar											
BP365	48	60	84	106	120	144	168	180	204	226	240
BP380, -485	48	72	96	106	132	156	180	192	216	240	264
BP3125	60	84	106	144	168	192	216	240	276	300	324
BP3150, -3160, -4175	72	96	132	156	192	226	252	288	312	348	384
BPSX160B, -170B	72	96	132	168	192	226	252	288	324	348	384
Canadian Solar											
CS5F-12, CS5E-15, CS5E-18, CS5E-20	24	36	48	60	72	84	96	106	120	132	144
CS6D-60, CS6D-65	60	84	106	132	168	192	216	240	264	300	324
CS5C-80, CS5C-90	48	72	96	120	132	156	180	204	216	240	264
CS5A-160, CS5A-170, CS5A-180	72	96	132	168	192	228	264	288	324	348	384
CS6A-160, CS6A-170, CS6P-170, CS6A-180, CS6P-180, CS6P-190, CS6P-200, CS6P-210, CS6P-220, CS6P-230, CS6P-240	84	120	156	204	240	276	312	360	396	432	468
CS5P-200, CS5P-210, CS5P-220, CS5P-230, CS5P-240	84	132	168	216	252	300	336	384	420	468	504
Evergreen											
EC-110-GL, EC-115-GL, EC-120GL	60	84	106	132	156	180	216	240	264	288	312
ES-170, ES-180, ES-190, ES-A-190, ES-195, ES-A-195, ES-A-200, ES-A-205, ES-A-210	84	120	156	192	228	264	300	348	384	420	456
GE Energy											
GEPV072, -085	48	72	84	106	132	156	168	192	216	240	252
GEPV100, -110	60	84	106	132	156	192	216	240	264	288	312
GEPVp130	60	84	106	132	168	192	216	240	264	300	324
GEPV173	84	120	156	192	240	276	312	348	384	432	-
GEPVp185, -200	84	120	156	204	240	276	312	360	396	-	-
Isotofón											
I-100	60	84	106	132	156	192	216	240	264	288	312
I-150S	84	132	168	216	252	300	336	372	420	-	-
I-165	84	120	156	192	240	276	312	348	384	420	-
Kaneka											
G-EA060, G-SA060	84	120	156	204	240	276	312	360	396	432	-

Required rail lengths (inches) for bottom mounting *(continued)*

Module make and model	Number of modules to be mounted per row											
	2	3	4	5	6	7	8	9	10	11	12	
Kyocera												
KC40T, KC50T, KC65T, KC85T, KC85TS, KC130GT, KC130TM	60	84	106	132	156	180	216	240	264	288	312	
KD130GX-LP, KD135GX-LP	60	84	106	132	168	192	216	240	264	300	324	
KC175GT, KD180GX-LP, KC200GT, KD205GX-LP, KD210GX-LP	84	120	156	204	240	276	312	252	396	432	468	
Mitsubishi												
PVMF110EC3, -I20EC3	60	84	106	132	156	180	204	240	264	288	312	
PVMF125EA2LF, -I30EA2LF	72	96	132	168	192	226	264	288	324	360	384	
PVMF165EB3	72	96	132	168	192	226	252	288	324	348	384	
Photowatt												
PW750	48	72	96	120	132	156	180	204	226	252	264	
PW1650	96	132	180	216	264	300	348	384	432	-	-	
Sharp												
ND-070ELU, ND-070ERU, ND-072ELU, ND-072ERU, ND-72ELUF, ND-72ERUF	84	120	156	204	240	276	312	360	396	432	468	
ND-162UI & UIF, ND-167UIF, ND167U3 & U3A	84	120	168	204	240	276	324	360	396	432	480	
ND-187UI & UIF, ND-198UIF	84	120	168	204	240	276	324	360	396	432	480	
ND-200UI & UIF, ND-205UI, ND-208UI & UIF & U2, ND-216UIF & U2	84	120	168	204	240	276	324	360	396	432	480	
ND-60RUI, ND-62RUI & RU2	36	48	72	84	96	120	132	144	156	180	192	
ND-123-UJF, ND-L3EJ, ND-L3EJEA	60	84	106	132	168	192	216	240	264	288	324	
ND-N0ECU, ND-N2ECU, ND-N2ECUF	84	120	156	204	240	276	312	360	396	432	468	
NE-170UI-VE, NT-175UI-VE, NT-180UI-VE	72	106	132	168	204	228	264	300	336	360	396	
ND-162UIY, ND167UI, ND-167UIY, ND-176UIY	84	120	168	204	240	276	324	360	396	432	480	
NE80-EJ, NE-80EJEA	48	72	96	106	132	156	180	192	216	240	264	
ND-200UIF-VE (& U1-VE), ND-205UI-VE, ND-208UIF (& U1-VE & U2-VE), ND-216UIF-VE (& U2-VE), ND-220UIF (& UIF-VE & U2 & U2-VE), ND-224UIF (&UIF-VE & U2 & U2-VE)	84	120	168	204	240	276	324	360	396	432	480	
NE-160UI, NE-170UI, NT-175UI, NT-180UI	72	106	132	168	204	228	264	300	336	360	396	
NE-165UI (& U5)	72	106	132	168	204	228	264	300	336	360	396	
Schott Solar												
ASE300, -315, -330	106	156	204	264	312	360	408	-	-	-	-	
SolarWorld (Shell)												
80P, 85P, SP75, SQ80	48	72	84	106	132	156	168	192	216	240	252	
165P, -PC; 175P, -PC; SQ165	72	106	132	168	204	226	264	300	324	360	396	

Required rail lengths (inches) for bottom mounting *(continued)*

Module make and model	Number of modules to be mounted per row										
	2	3	4	5	6	7	8	9	10	11	12
SunPower											
SPR90, -95	48	72	84	106	132	156	168	192	216	240	252
SPR200BLK, -210, -215BLK, -220	72	96	132	168	192	226	252	288	324	348	384
Suntech											
STP060-12/Sb	60	84	106	132	156	180	204	226	252	276	312
STP085S	48	72	96	120	132	156	180	204	216	240	264
STPI 10-12Tb; STPI 15-12Tc; STPI 20, -130, -140	60	84	120	144	168	192	216	252	276	300	324
STPI 10-24Ab, STPI 175-24AbI	72	96	132	168	192	226	264	288	324	360	384
SunWize											
SW50A, SW55A, SW60A	48	72	96	120	144	168	192	204	228	252	276
SW50C, SW55C, SW60C	48	60	84	106	120	144	168	180	204	228	240
SW75A, SW80A	48	72	96	120	144	168	192	216	240	264	288
SW90C, SW100C	48	72	96	120	132	168	180	204	216	240	264
SW150	72	96	132	156	192	216	252	276	312	336	372
SW170, SW175, SW180	72	96	132	168	192	228	264	288	324	360	384
UniSolar											
ES62T	72	96	132	168	192	226	252	288	324	348	384
US64	60	96	120	156	180	216	240	264	300	324	360
Yingli											
YL80, -85	48	72	96	120	132	156	180	204	216	240	264

SOLARMOUNT

Rail Price List



SolarMount® standard rails

Clear Anodized aluminum

Item no.	Description	Nominal shipping weight	List price
300002	1 ea. 48 in.	3 lbs.	\$ 32.50
300003	1 ea. 60 in.	4 lbs.	38.00
300004	1 ea. 72 in.	5 lbs.	46.00
300005	1 ea. 84 in.	6 lbs.	53.50
300006	1 ea. 96 in.	7 lbs.	58.50
300007	1 ea. 106 in.	8 lbs.	64.50
300008	1 ea. 120 in.	9 lbs.	73.00
300009	1 ea. 132 in.	10 lbs.	78.00
300010	1 ea. 144 in.	10 lbs.	85.00
300011	1 ea. 156 in.	11 lbs.	92.00
300012	1 ea. 168 in.	12 lbs.	99.00
300013	1 ea. 180 in.	12 lbs.	106.00
300014	1 ea. 192 in.	13 lbs.	113.50
300015	1 ea. 204 in.	14 lbs.	120.50
300016	1 ea. 216 in.	15 lbs.	127.50
300017	1 ea. 228 in.	15 lbs.	134.50
300018	1 ea. 240 in.	16 lbs.	141.50



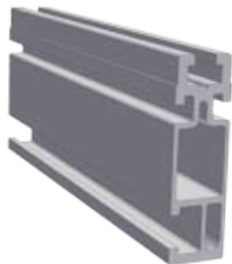
SolarMount® standard rails

Mill Ship aluminum (Clear anodized and Mill Finish)

Item no.	Description	Nominal shipping weight	List price
Clear anodized			
300024	1 ea. 96in.	7 lbs.	\$ 49.50
300025	1 ea. 106 in.	8 lbs.	56.00
300026	1 ea. 120 in.	9 lbs.	62.50
300027	1 ea. 132 in.	10 lbs.	68.50
300028	1 ea. 144 in.	10 lbs.	74.50
300029	1 ea. 156 in.	11 lbs.	81.00
300030	1 ea. 168 in.	12 lbs.	87.50
300031	1 ea. 180 in.	12 lbs.	94.00
300032	1 ea. 192 in.	13 lbs.	100.00
300033	1 ea. 204 in.	14 lbs.	106.50
300034	1 ea. 216 in.	15 lbs.	112.50
300035	1 ea. 228 in.	15 lbs.	119.00
300036	1 ea. 240 in.	16 lbs.	126.00
Mill Finish			
300037	1 ea. 96 in.	7 lbs.	44.00
300038	1 ea. 106 in.	8 lbs.	49.00
300039	1 ea. 120 in.	9 lbs.	54.50
300040	1 ea. 132 in.	10 lbs.	60.00
300041	1 ea. 144 in.	10 lbs.	65.00
300042	1 ea. 156 in.	11 lbs.	70.50
300043	1 ea. 168 in.	12 lbs.	75.50
300044	1 ea. 180 in.	12 lbs.	80.50
300045	1 ea. 192 in.	13 lbs.	86.00
300046	1 ea. 204 in.	14 lbs.	91.50
300047	1 ea. 216 in.	15 lbs.	96.50
300048	1 ea. 228 in.	15 lbs.	101.50
300049	1 ea. 240 in.	16 lbs.	107.00

Pro-Pak Rails

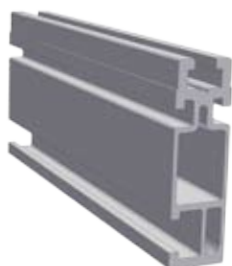
Use Pro-Pak component pricing when regularly using SolarMount on multiple installations.



SolarMount® standard rails: Bundles of 8 rails

PRO-PAK: Standard rail bundles consist of 8 rails. Bundles listed here do not include L-feet or hardware. See the SolarMount sizing chart to determine rail length appropriate to your installation. If desired rail length exceeds 240 inches, order a splice and two segments. Spliced segments should be as close to equal in length as possible.

Item no.	Rail length (inches)	Nominal ship size (inches)	Nominal ship weight (lbs)	List price
300101	48	51 x 5 x 3	30	\$ 258.00
300102	60	63 x 5 x 3	36	301.50
300103	72	75 x 5 x 3	44	347.00
300104	84	87 x 5 x 3	50	392.00
300105	96	99 x 5 x 3	55	437.00
300106	106	109 x 5 x 3	61	481.50
300107	120	123 x 5 x 3	67	532.50
300108	132	135 x 5 x 3	72	582.50
300109	144	147 x 5 x 3	78	632.50
300110	156	159 x 5 x 3	92	683.00
300111	168	171 x 5 x 3	100	733.50
300112	180	183 x 5 x 3	108	785.00
300113	192	195 x 5 x 3	114	835.00
300114	204	207 x 5 x 3	120	885.50
300115	216	219 x 5 x 3	128	936.00
300116	228	229 x 5 x 3	135	974.50
300117	240	243 x 5 x 3	142	1,026.00



SolarMount® standard rails: 2-rail kits

Each kit contains 2 rails equal to the row length, L-feet, and hardware to join L-feet to rails.

Item no.	Rail length (inches)	No. of L-feet	Nom. shipping data		List price
			inches	lbs	
300201	48	4	51 x 4 x 3	13	\$ 110.00
300202	60	4	63 x 4 x 3	14	126.50
300203	72	4	75 x 4 x 3	16	144.50
300204	84	4	87 x 4 x 3	17	161.50
300205	96	4	99 x 4 x 3	19	178.50
300206	106	4	109 x 4 x 3	20	195.00
300207	120*	6	123 x 4 x 3	22	217.00
300208	132*	6	133 x 4 x 3	24	234.00
300209	144*	6	147 x 4 x 3	25	250.50
300210	156*	6	159 x 4 x 3	27	267.00
300211	168*	6	169 x 4 x 3	28	284.00
300212	180*	6	183 x 4 x 3	30	307.00
300213	192*	8	195 x 4 x 3	31	323.50
300214	204*	8	207 x 4 x 3	33	340.50
300215	216†	8	219 x 4 x 3	34	357.00

* Rail kits from 120 to 204 inches normally ship truck freight. For UPS shipment, add one cut and splice fee per rail set (item no. 990201, \$30.00).

† Ships via truck freight only.



SolarMount standard 4-rail kits for long rows

Each kit contains four rail segments, two splices, L-feet, and hardware to join L-feet to rails. Rail segments and splices assemble into two spliced rails equal to the row length. These kits ship via truck freight only.

Item no.	Rail length (inches)	Segment length (inches)	No. of L-feet	Nom. shipping data		List price
				inches	lbs	
300224	226	106/120	10	123 x 5 x 3	40	\$ 391.00
300225	240	120/120	10	123 x 5 x 3	42	407.50
300226	252	132/120	10	135 x 5 x 3	44	424.50
300227	264	132/132	10	135 x 5 x 3	46	435.50
300228	276	144/132	10	147 x 5 x 3	47	453.00
300229	288	144/144	10	147 x 5 x 3	48	469.50
300230	300	156/144	12	159 x 5 x 3	50	492.00
300231	312	156/156	12	159 x 5 x 3	52	508.50
300232	324	168/156	12	171 x 5 x 3	53	525.00
300233	336	168/168	12	171 x 5 x 3	54	542.00
300234	348	180/168	14	183 x 5 x 3	56	558.50
300235	360	180/180	14	183 x 5 x 3	58	570.50
300236	372	192/180	14	195 x 5 x 3	59	587.00
300237	384	192/192	14	195 x 5 x 3	60	604.00
300238	396	204/192	14	207 x 5 x 3	62	620.50
300239	408	204/204	14	207 x 5 x 3	64	637.00
300240	420	216/204	16	219 x 5 x 3	65	660.50
300241	432	216/216	16	219 x 5 x 3	66	670.50

SolarMount® HD (heavy duty) rails

Mill Finish aluminum



Item no.	Description	Nominal shipping weight	List price
301002	1 ea. 60 in.	7 lbs.	\$ 61.00
301003	1 ea. 72 in.	8 lbs.	71.50
301004	1 ea. 84 in.	9 lbs.	82.50
301005	1 ea. 96 in.	11 lbs.	93.50
301006	1 ea. 108 in.	12 lbs.	104.00
301007	1 ea. 120 in.	13 lbs.	115.50
301008	1 ea. 132 in.	14 lbs.	126.50
301009	1 ea. 144 in.	16 lbs.	139.00
301010	1 ea. 156 in.	17 lbs.	148.00
301011	1 ea. 168 in.	18 lbs.	158.50
301012	1 ea. 180 in.	19 lbs.	169.50
301013	1 ea. 192 in.	21 lbs.	181.00
301014	1 ea. 204 in.	22 lbs.	191.50
301015	1 ea. 216 in.	23 lbs.	202.50
301016	1 ea. 228 in.	25 lbs.	213.00
301017	1 ea. 240 in.	26 lbs.	224.00
301018	1 ea. 252 in.	27 lbs.	235.50
301019	1 ea. 264 in.	29 lbs.	246.00
301020	1 ea. 276 in.	30 lbs.	257.00
301021	1 ea. 288 in.	31 lbs.	267.50
301022	1 ea. 300 in.	32 lbs.	278.50

**SolarMount® HD (heavy duty) rails**

Clear Anodized aluminum

Item no.	Description	Nominal shipping weight	List price
301112	1 ea. 60 in.	7 lbs.	\$ 68.00
301113	1 ea. 72 in.	8 lbs.	80.00
301114	1 ea. 84 in.	9 lbs.	92.50
301115	1 ea. 96 in.	11 lbs.	104.50
301116	1 ea. 108 in.	12 lbs.	117.00
301117	1 ea. 120 in.	13 lbs.	129.00
301118	1 ea. 132 in.	14 lbs.	141.50
301119	1 ea. 144 in.	16 lbs.	153.50
301120	1 ea. 156 in.	17 lbs.	165.50
301121	1 ea. 168 in.	18 lbs.	178.00
301122	1 ea. 180 in.	19 lbs.	190.00
301123	1 ea. 192 in.	21 lbs.	202.50
301124	1 ea. 204 in.	22 lbs.	214.50
301125	1 ea. 216 in.	23 lbs.	227.00
301126	1 ea. 228 in.	25 lbs.	239.00
301127	1 ea. 240 in.	26 lbs.	251.00
301128	1 ea. 252 in.	27 lbs.	263.50
301129	1 ea. 264 in.	29 lbs.	275.50
301130	1 ea. 276 in.	30 lbs.	288.00
301131	1 ea. 288 in.	31 lbs.	300.00
301132	1 ea. 300 in.	32 lbs.	312.50

SolarMount® HD (heavy duty) rails

Mill Ship aluminum



Item no.	Description	Nominal shipping weight	List price
Mill Finish			
301133	1 ea. 96 in.	11 lbs.	\$ 85.50
301134	1 ea. 108 in.	12 lbs.	96.50
301135	1 ea. 120 in.	13 lbs.	106.50
301136	1 ea. 132 in.	14 lbs.	117.50
301137	1 ea. 144 in.	16 lbs.	128.00
301138	1 ea. 156 in.	17 lbs.	138.50
301139	1 ea. 168 in.	18 lbs.	149.50
301140	1 ea. 180 in.	19 lbs.	159.50
301141	1 ea. 192 in.	21 lbs.	170.50
301142	1 ea. 204 in.	22 lbs.	181.50
301143	1 ea. 216 in.	23 lbs.	191.50
301144	1 ea. 228 in.	25 lbs.	202.50
301145	1 ea. 240 in.	26 lbs.	213.00
301146	1 ea. 252 in.	27 lbs.	223.50
301147	1 ea. 264 in.	29 lbs.	234.50
301148	1 ea. 276 in.	30 lbs.	245.00
301149	1 ea. 288 in.	31 lbs.	255.50
301150	1 ea. 300 in.	32 lbs.	266.50

SolarMount® HD (heavy duty) rails

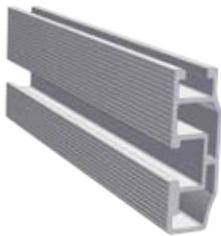
Clear Anodized mill ship aluminum



Item no.	Description	Nominal shipping weight	List price
Clear Anodized			
301151	1 ea. 96 in.	11 lbs.	97.00
301152	1 ea. 108 in.	12 lbs.	108.50
301153	1 ea. 120 in.	13 lbs.	120.50
301154	1 ea. 132 in.	14 lbs.	132.50
301155	1 ea. 144 in.	16 lbs.	144.50
301156	1 ea. 156 in.	17 lbs.	156.00
301157	1 ea. 168 in.	18 lbs.	168.50
301158	1 ea. 180 in.	19 lbs.	180.50
301159	1 ea. 192 in.	21 lbs.	192.00
301160	1 ea. 204 in.	22 lbs.	204.00
301161	1 ea. 216 in.	23 lbs.	216.00
301162	1 ea. 228 in.	25 lbs.	228.00
301163	1 ea. 240 in.	26 lbs.	239.50
301164	1 ea. 252 in.	27 lbs.	252.00
301165	1 ea. 264 in.	29 lbs.	264.00
301166	1 ea. 276 in.	30 lbs.	275.50
301167	1 ea. 288 in.	31 lbs.	288.00
301168	1 ea. 300 in.	32 lbs.	299.50

SolarMount® light rails

Clear Anodized aluminum



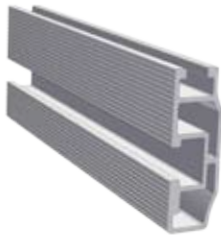
Item no.	Description	Nominal shipping weight	List price
303001	1 ea. 48 in.	3 lbs.	\$ 26.00
303002	1 ea. 60 in.	3 lbs.	31.50
303003	1 ea. 72 in.	4 lbs.	36.50
303004	1 ea. 84 in.	5 lbs.	42.00
303005	1 ea. 96 in.	5 lbs.	47.00
303006	1 ea. 106 in.	5 lbs.	52.00
303007	1 ea. 120 in.	6 lbs.	57.50
303008	1 ea. 132 in.	6 lbs.	63.00
303009	1 ea. 144 in.	7 lbs.	68.00
303010	1 ea. 156 in.	8 lbs.	73.00
303011	1 ea. 168 in.	9 lbs.	78.50
303012	1 ea. 180 in.	9 lbs.	83.50
303013	1 ea. 192 in.	10 lbs.	89.00
303014	1 ea. 204 in.	10 lbs.	94.50
303015	1 ea. 216 in.	11 lbs.	99.00



SolarMount® light rails: Bundles of 10 rails

PRO-PAK: Light rail bundles consist of 10 rails. Bundles listed here do not include L-feet or hardware. See the SolarMount sizing chart to determine rail length appropriate to your installation. If desired rail length exceeds 216 inches, order a splice and two segments. Spliced segments should be as close to equal in length as possible.

Item no.	Rail length (inches)	Nominal ship size (inches)	Nominal ship weight (lbs)	List price
303101	48	51 x 5 x 3	25	\$219.50
303102	60	63 x 5 x 3	30	264.00
303103	72	75 x 5 x 3	36	308.00
303104	84	87 x 5 x 3	41	351.50
303105	96	99 x 5 x 3	45	396.00
303106	106	109 x 5 x 3	50	440.00
303107	120	123 x 5 x 3	55	484.50
303108	132	135 x 5 x 3	59	528.50
303109	144	147 x 5 x 3	64	572.50
303110	156	159 x 5 x 3	75	616.50
303111	168	171 x 5 x 3	82	660.50
303112	180	183 x 5 x 3	88	705.00
303113	192	195 x 5 x 3	93	749.00
303114	204	207 x 5 x 3	98	793.50
303115	216	219 x 5 x 3	104	837.00



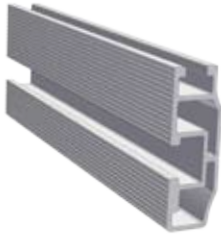
SolarMount® light rails: 2-rail kits

Each kit contains 2 rails equal to the row length, L-feet, and hardware to join L-feet to rails.

Item no.	Rail length (inches)	No. of L-feet	Nom. shipping data		List price
			inches	lbs	
303201	48	4	51 x 4 x 3	9	\$ 91.50
303202	60	4	63 x 4 x 3	10	103.50
303203	72	4	75 x 4 x 3	11	116.00
303204	84	4	87 x 4 x 3	12	127.50
303205	96	6	99 x 4 x 3	13	140.00
303206	106	6	109 x 4 x 3	14	152.50
303207	120*	6	123 x 4 x 3	15	164.50
303208	132*	8	133 x 4 x 3	17	176.50
303209	144*	8	147 x 4 x 3	18	188.50
303210	156*	8	159 x 4 x 3	19	201.00
303211	168*	8	169 x 4 x 3	20	212.50
303212	180*	10	183 x 4 x 3	21	225.00
303213	192*	10	195 x 4 x 3	22	237.50
303214	204*	10	207 x 4 x 3	23	249.50
303215	216†	10	219 x 4 x 3	23	261.50

* Rail kits from 120 to 204 inches normally ship truck freight. For UPS shipment, add one cut and splice fee per rail set (item no. 990201, \$30.00).

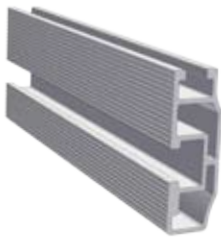
† Ships via truck freight only.



SolarMount light 4-rail kits for long rows

Each kit contains four rail segments, two splices, L-feet, and hardware to join L-feet to rails. Rail segments and splices assemble into two spliced rails equal to the row length. These kits ship via truck freight only.

Item no.	Rail length (inches)	Segment length (inches)	No. of L-feet	Nom. shipping data		List price
				inches	lbs	
303216	226	106/120	12	123 x 5 x 3	28	\$301.00
303217	240	120/120	12	123 x 5 x 3	29	313.50
303218	252	132/120	12	135 x 5 x 3	31	325.00
303219	264	132/132	14	135 x 5 x 3	32	337.50
303220	276	144/132	14	147 x 5 x 3	33	350.00
303221	288	144/144	14	147 x 5 x 3	34	362.00
303222	300	156/144	16	159 x 5 x 3	35	374.00
303223	312	156/156	16	159 x 5 x 3	36	386.00
303224	324	168/156	16	171 x 5 x 3	37	398.50
303225	336	168/168	16	171 x 5 x 3	38	410.00
303226	348	180/168	18	183 x 5 x 3	39	422.50
303227	360	180/180	18	183 x 5 x 3	41	435.00
303228	372	192/180	18	195 x 5 x 3	41	446.50
303229	384	192/192	20	195 x 5 x 3	42	459.00
303230	396	204/192	20	207 x 5 x 3	43	471.00
303231	408	204/204	20	207 x 5 x 3	45	483.50
303232	420	216/204	20	219 x 5 x 3	46	495.00
303233	432	216/216	20	219 x 5 x 3	46	507.50



SolarMount® light rails

Mill Ship aluminum

Item no.	Description	Nominal shipping weight	List price
Clear anodized			
303234	1 ea. 96in.	5 lbs.	\$ 36.00
303235	1 ea. 106 in.	5 lbs.	40.50
303236	1 ea. 120 in.	6 lbs.	44.00
303237	1 ea. 132 in.	6 lbs.	48.50
303238	1 ea. 144 in.	7 lbs.	52.50
303239	1 ea. 156 in.	8 lbs.	57.00
303240	1 ea. 168 in.	9 lbs.	61.50
303241	1 ea. 180 in.	9 lbs.	65.50
303242	1 ea. 192 in.	10 lbs.	70.00
303243	1 ea. 204 in.	10 lbs.	74.00
303244	1 ea. 216 in.	11 lbs.	78.00
303245	1 ea. 228 in.	12 lbs.	82.50
303246	1 ea. 240 in.	13 lbs.	87.00

SOLARMOUNT

Accessories Price List

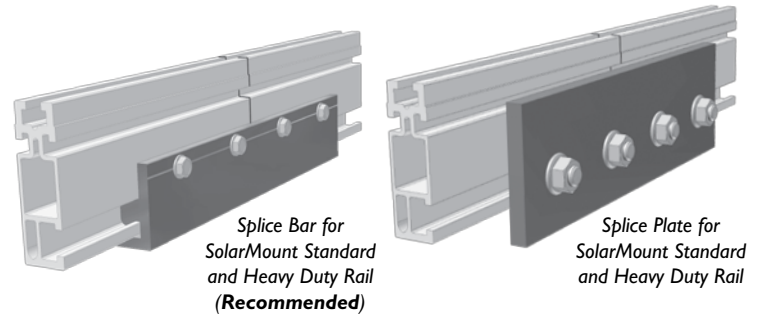
PRO-PAK SPLICES

Use Pro-Pak component pricing when regularly using SolarMount on multiple installations.

Splices for SolarMount® standard rail

PRO-PAK: Order one splice wherever two segments are to be joined into a single rail.

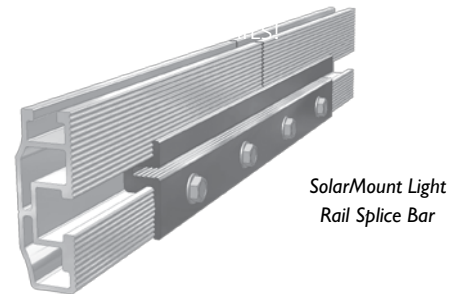
Part no.	Description	Nom. ship		List price
		Qty.	wt. (lbs)	
310229	Bar w/ hardware	20	10	112.00
310230	Bar w/ hardware	1	1	12.58
310214	Plate w/hardware	1	1	\$ 14.97
310216	Plate w/hardware	20	14	271.00



Splices for SolarMount® light rail

PRO-PAK: Each splice joins two rail segments.

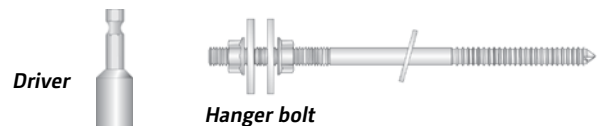
Part no.	Description	Nom. ship		List price
		Qty.	wt. (lbs)	
310231	Bar w/ hardware	1	1	6.87
310232	Bar w/ hardware	20	10	80.50



Hanger bolts and driver

Used in conjunction with L-feet, 8-inch hanger bolts support SolarMount rails above tile or corrugated metal roofs. A driver allows easy insertion into $\frac{3}{16}$ -inch pilot holes in the rafters.

Part no.	Description	Nominal		List price
		Quantity	ship wt. (lbs)	
310025	8" x $\frac{3}{8}$ " s/s hanger bolt with s/s nut and washers	1	1	\$ 12.80
310046		20	5	205.00
310026	$\frac{3}{8}$ " hanger bolt driver	1	1	22.50



Junction Plate

In shared-rail configurations (standard and HD rail only), attach modules with four-slot junction plates. North-south slots secure the rail to the plates. East-west slots secure a module on each side of the rail.

Part no.	Description	Nominal		List price
		Quantity	ship wt. (lbs)	
321201	Mill Finish	1	1	\$ 6.67
321219	Mill Finish	20	7	109.00



Standard stainless steel fasteners

Avoid chasing fasteners after job-site drop. Frequent SolarMount users can keep spares handy in their toolboxes.

Description	Nom. ship		Part no.	List Price
	Qty	wt. (lbs)		
Clear finish				
Bolt, 1/4" x 5/8", flange nut	1		321202	\$ 0.59
	20	1	321204	9.07
Bolt, 3/8" x 3/4", flange nut	1		990335	1.28
	20	3	990336	21.50
Bolt, 3/8" x 1 1/4", flange nut	1		990337	1.33
	20	3	990338	23.50
T-bolt, 1/4" x 2", flange nut	1		321212	1.46
	20	1	321213	29.00
T-bolt, 1/4" x 2 1/2", flange nut	1		321214	1.68
	20	1	321215	33.00
Dark finish				
T-bolt, 1/4" x 2", flange nut	1		321272	1.57
	20	1	321273	31.00
T-bolt, 1/4" x 2 1/2", flange nut	1		321274	1.96
	20	1	321275	38.00

Security hardware

Security hardware dramatically increases the difficulty and time required for a thief to dismantle a PV array and steal its components. Breakaway nuts work well in conjunction with top mounting clamps and footing bolts.

Note that starhead bolt heads do not fit into SolarMount rail slots (where standard bolt heads are inaccessible). Use them where heads are exposed—with bottom mounting module clips, for example.

Description	Quantity	Part no.	List price
Starhead bolt, s/s, 1/4" x 3/4"	20	321220	25.00
Starhead bolt, s/s, 3/8" x 1 1/4"	20	321221	68.50
Breakaway nut, aluminum, 1/4"	20	321222	24.00
Breakaway nut, aluminum, 3/8"	20	321223	31.50
Star key, 1/4"	1	321209	18.67
Star key, 3/8"	1	321210	22.50

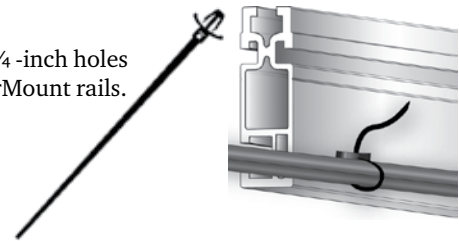


Cable ties and shims

Part no.	Description	Qty	Nom. ship	
			wt. (lbs)	List price
990104	Push mount cable tie, black	100	1	\$29.00
990105	Shim, 1 1/2" x 2" x 1/16", blue	20	1	4.00
990106	Shim, 1 1/2" x 2" x 1/8", red	20	1	4.90
990107	Shim, 1 1/2" x 2" x 1/4", black	20	1	6.15
990108	Tapered shim, 1 1/2" x 3 3/8", black plastic	20	1	11.73

Cable ties

Cable ties fit into 1/4-inch holes drilled along SolarMount rails.



Shims

Shims level or raise standoffs and L-feet and precisely align rails. Horseshoe shims come in three color-coded thicknesses. Our tapered shim is particularly useful in leveling.



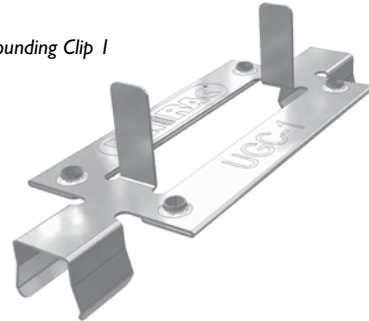
Pro-Pak Grounding Hardware

Unirac grounding clip 1 (UGC-1)

PRO-PAK: Order a grounding clip for every two top mounting clamps (end clamps + mid clamps) in your installation. Only one of the two rails in each row requires grounding clips.

Item no.	Quantity	Nominal ship weight (lbs)	List price
980005	10	1	\$ 23.00
980006	50	1	111.00
980002	100	1	218.00
980003	250	2	530.00
980004	500	4	1,040.00

Unirac Grounding Clip 1

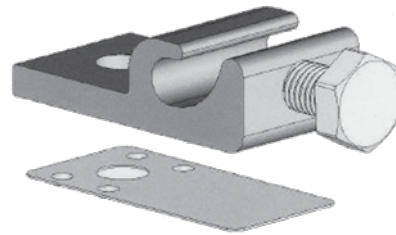


WEEB Grounding lugs

PRO-PAK: Order two grounding lugs for each rail splice and one additional lug for each rail.

Item no.	Quantity	Nominal ship weight (lbs)	List price
980010	1	1	\$ 13.30
980011	10	2	119.50
980012	100	8	1,061.50

WEEB Grounding Lug



SOLARMOUNT

Tilt Leg Sizing Chart & Price List

Sizing Chart: Tilt angles for high profile legs

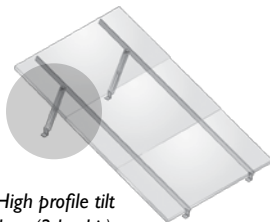
In high profile arrays, tilt angles depends on leg and rail lengths.

Rail length (inches)	Leg kit model number			Rail length (inches)	Leg kit model number		
	310107	310108	310109		310110	310111	310112
48	9-21°	30-60°		120	26-60°	5-12°	16-47°
60	7-17°	24-60°	37-60°	132	24-60°	5-11°	15-42°
72	6-14°	19-54°	31-60°	144	22-60°	4-10°	13-38°
84	5-12°	17-46°	26-60°	156	20-60°	4-9°	12-35°
96	4-10°	14-40°	23-60°	168	18-55°	4-9°	11-33°
106	4-9°	13-36°	21-60°	180	17-51°	3-8°	11-30°

Price List: High profile tilt legs (2 leg kit)

Each kit contains two square tubes, two strut inserts, and fasteners for use with SolarMount rail kits (pp. 13-14).

Part no.	Maximum leg extension (inches)	Nom. shipping data		List price
		inches	lbs	
310107	12	10 x 2 x 4	3	\$51.00
310108	44	26 x 2 x 4	7	78.00
310109	72	40 x 2 x 4	10	102.50



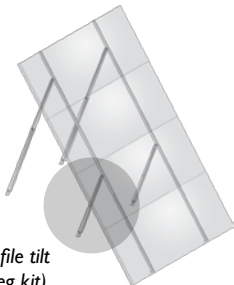
For rails 48 to 106 inches long, use leg kits with a single leg per rail, 2 legs per kit.

High profile tilt legs (2 leg kit)

Price List: High profile tilt legs (4 leg kit)

Each kit contains four square tubes, four strut inserts, and fasteners for use with SolarMount rail kits (pp. 13-14).

Part no.	Maximum leg extension (inches)	Nom. shipping data		List price
		inches	lbs	
310110	104	56 x 4 x 4	20	\$216.50
310111	18	13 x 4 x 4	7	96.00
310112	64	36 x 4 x 4	16	160.50



Rails 120 to 180 inches long require leg kits with a long and a short leg for each rail, 4 legs per kit.

High profile tilt legs (4 leg kit)

Price List: Custom fixed legs (1 leg per kit)

Each low profile tilt leg kit contains one square tube and stainless steel hardware for use with SolarMount rail kit.

Part no.	Leg Length (inches)	Nom. shipping data		List price
		inches	lbs	
310113-007	7	8 x 3 x 3	2	\$ 15.00
310113-010	10	11 x 3 x 3	2	16.50
310113-011	11	12 x 3 x 3	2	17.00
310113-012	12	13 x 3 x 3	2	17.00
310113-015	15	16 x 3 x 3	2	19.00
310113-016	16	17 x 3 x 3	2	19.50
310113-017	17	18 x 3 x 3	2	20.00
310113-018	18	19 x 3 x 3	2	20.50
310113-020	20	21 x 3 x 3	2	21.50
310113-022	22	23 x 3 x 3	2	22.50
310113-024	24	25 x 3 x 3	2	23.50
310113-028	28	29 x 3 x 3	3	25.50
310113-034	34	35 x 3 x 3	3	28.50
310113-040	40	41 x 3 x 3	3	31.50
310113-048	48	49 x 3 x 3	3	35.50
310113-120	120	121 x 3 x 3	7	71.50

Sizing Chart: Tilt angles for low profile adjustable leg kits

In low profile arrays, tilt angles depend on leg length and module length. If ordering kits for use with SolarMount rail kits, no other items are required. If ordering for use with Pro-Pak rails, then L-feet must also be ordered.

Module make and model	Leg kit model number		
	310121	310122	310123
AEE			
AE80J*	15-19°	31-49°	45-60°
BP Solar			
BP365	16-20°	34-53°	49-60°
BP380, -485	15-20°	32-51°	47-60°
BP3125	11-14°	24-37°	34-56°
BP3150, -3160, -4175	11-14°	22-35°	32-53°
BPSX160B, -170B	11-13°	22-35°	32-53°
Evergreen			
EC102, -110, -115	12-15°	24-38°	35-58°
ESI70RL, -180RL, -190RL	16-20°	34-53°	48-60°
GE Energy			
GEPV072, -085	15-19°	31-49°	45-60°
GEPV100, -110	21-27°	45-60°	60°
GEPVp130	13-16°	26-41°	38-60°
GEPV173	21-27°	45-60°	60°
GEPVp185†, -200†	12-16°	26-41°	38-60°
Isofoton			
I-100	17-21°	36-56°	51-60°
I-150S	17-21°	36-56°	51-60°
I-165	17-21°	36-56°	51-60°
Kaneka			
G-EA060†, G-SA060†	19-24°	40-60°	58-60°
Kyocera			
KC80, 80-01, 85T, 85TS	12 - 21°	33 - 60°	N/A
KC158G, 167G, 170GT, 175GT, KD180GXLP	10 - 16°	26 - 46°	38 - 72°
KC120-1, 125, 125G, 125GT, 130GT, 130TM, 187G, 190GT, 200GT	9 - 15°	23 - 42°	34 - 65°
KC130SX-MP, 135SX-MP, KD130GX-LP, 135GX-LP, KD205GX-LP, 210GX-LP	7 - 14°	22 - 40°	33 - 60°
Mitsubishi			
PVMF110EC3†, -120EC3†	13-17°	27-43°	39-60°
PVMF125EA2LF, -130EA2LF	15-19°	31-50°	45-60°
PVMF165EB3	12-15°	26-40°	37-60°
Photowatt			
PW750, -1650	14-17°	29-45°	41-60°
Sanyo			
HIP-190BA3†, -195BA3†, -200BA3† HIP/HIT xxxDA3	14-18°	30-47°	42-60°
Schott Solar			
ASE300, -315, -330	15-19°	31-49°	44-60°
Sharp			
NE-80EJEA	14-18°	31-48°	44-60°
ND-L3EJEA (123w), -L5EIU (125w)	13-17°	28-44°	40-60°
ND-N2ECU	17-21°	36-56°	51-60°
ND-162UI, -162UIF, -167U3, -167UIF	17-21°	36-56°	51-60°

Module make and model	Leg kit model number		
	310121	310122	310123
NE-165UI†, NT-175UI†	12-15°	25-39°	36-59°
NE170UI, -175UI	15-19°	31-50°	45-60°
ND-200UI, -200UIF, -208UI, 208UIF	13-16°	27-42°	39-60°
SolarWorld (Shell)			
80P, 85P, SP75, SQ80	14-18°	30-47°	43-60°
65P, -PC; 75P, -PC; SQ165	12-15°	25-39°	36-60°
SunPower			
SPR90, -95	17-21°	35-55°	50-60°
SPR200BLK, -210, -215BLK, -220	17-22°	37-58°	53-60°
Suntech			
STP060-12/Sb, STP085S	17-21°	35-56°	51-60°
STPI10-12Tb; STPI15-12Tc; STPI20, -130, -140	10-13°	21-33°	30-49°
STPI10-24Ab; STPI75-24Ab1	9-12°	19-30°	28-45°
SunWize			
SW85, -90, -95	12-15°	25-40°	36-60°
SW100, -110, -115, -120	12-15°	25-40°	36-60°
SW155, -165	11-14°	23-36°	33-54°
UniSolar			
ES62T†	15-19°	31-49°	44-60°
US64	17-21°	35-56°	51-60°
Yingli			
YL80, -85†	16-20°	33-52°	48-60°

*Mount with bottom mounting clips only.

†In low profile tilt-up applications, mount with top mounting clamps only.

Sizing Chart: Quantity of low profile tilt legs required

The number of tilt legs required in a low profile array depends on the length of the mounting rails.

Rail length per row	Tilt legs required per row
48" to 106"	2
120" to 180"	3
192" to 216"	4
226" to 288"	5
300" to 336"	6
348" to 408"	7
420" to 432"	8

Price List: Low profile tilt legs (1 leg per kit)

Each low profile tilt leg kit contains one square tube and one strut insert, two L-feet, and stainless steel hardware for use with SolarMount rail kit.

Part no.	Maximum leg extension (inches)	Nom. shipping data		List price
		inches	lbs	
310121	12	10 x 3 x 3	2	\$35.75
310126	18	12 x 3 x 3	2	38.00
310122	30	19 x 3 x 3	3	44.75
310123	44	26 x 3 x 3	4	52.00

SOLARMOUNT

Top & Bottom Mounting Price List

For individual installations, order 1 kit for each row of modules you plan to mount.

Use Pro-Pak component prices when regularly using SolarMount on multiple installations. See pages 6-8 for the clamp size for your module type. End clamps: Order 4 for each row of modules you plan to mount. Mid clamps: For each row, take one less than the number of modules in the row and multiply that figure by 2. For example, a row of 4 modules requires 6 mid clamps: (4 - 1) x 2 = 6. You should verify that the module thickness matches the size given for each top clamp. Manufacturers may change dimensions without notice.

A modules 24-26 mm thick (0.94"- 1.02")

SUCH AS PHOTOWATT 750

KITS: End clamps, mid clamps, T-bolts, and flange nuts for one row of modules

Modules per row	Clear anodized Part no.	List price	Nominal ship wt. (lbs)
2	320024	\$26.50	1
3	320032	32.00	2
4	320040	38.00	2
5	320048	42.00	2
6	320056	46.00	2
7	320062	52.50	2
8	320068	57.50	2
9	320125	62.50	3
10	320126	67.50	3
11	320127	72.50	3
12	320128	76.50	3

PRO-PAK: Clamps with T-bolts and flange nuts

Clamp	Qty	Clear anodized Part no.	List price	Nominal ship wt. (lbs)
End	1	320001	\$ 5.24	2
	20	320012	43.50	
Mid	1	320008	5.24	2
	20	320020	48.50	

B modules 30-32 mm thick (1.18"- 1.26")

SUCH AS SUNTECH (<100 WATTS), UNISOLAR

KITS: End clamps, mid clamps, T-bolts, and flange nuts for one row of modules

Modules per row	Clear anodized Part no.	List price	Nominal ship wt. (lbs)
2	320025	\$26.50	1
3	320033	32.00	2
4	320041	38.00	2
5	320049	42.00	2
6	320057	46.00	2
7	320063	52.50	2
8	320069	57.50	3
9	320129	62.50	3
10	320130	67.50	3
11	320131	72.50	3
12	320132	76.50	3

PRO-PAK: Clamps with T-bolts and flange nuts

Clamp	Qty	Clear anodized Part no.	List price	Nominal ship wt. (lbs)
End	1	320002	\$ 5.24	2
	20	320013	43.50	
Mid	1	320008	5.24	2
	20	320020	48.50	

Clamps are sized to the thickness of the PV modules you are mounting.



Mid clamp, sizes A-F and J-K



End clamp, sizes A-F and J-K

C modules 34-36 mm thick (1.34"- 1.42")

Such as, Evergreen (EC), GE Energy, Kyocera, Sharp NE-80EJEA, SolarWorld (<100 watts or "Mono"), Suntech (between 130w and 210w), SunWize (<150 watts), Yingli, Day4.

KITS: End clamps, mid clamps, T-bolts, and flange nuts for one row of modules

Modules per row	Clear anodized Part no.	List price	Dark bronze anodized Part no.	List price	Nominal ship wt. (lbs)
2	320026	\$26.50	320088	\$27.50	1
3	320034	32.00	320089	33.50	2
4	320042	38.00	320090	39.50	2
5	320050	42.00	320091	44.00	2
6	320058	46.00	320092	47.50	2
7	320064	52.50	320093	54.00	2
8	320070	57.50	320094	59.50	3
9	320133	62.50	320149	65.50	3
10	320134	67.50	320150	70.50	3
11	320135	72.50	320151	76.50	3
12	320136	76.50	320152	80.50	3

PRO-PAK: Clamps with T-bolts and flange nuts

Clamp	Qty	Clear anodized Part no.	List price	Nominal ship wt. (lbs)
End	1	320003	\$ 5.24	2
	20	320014	43.50	
Mid	1	320008	5.24	2
	20	320020	48.50	
Dark bronze anodized				
Clamp	Qty	Part no.	List price	Nominal ship wt. (lbs)
End	1	320117	\$ 5.58	2
	20	320081	56.50	
Mid	1	320119	6.81	2
	20	320084	67.50	

Top & Bottom Mounting Clamps (continued)

D for modules 38–40 mm thick (1.50” - 1.57”)

Such as Isofotón, Kaneka, Photowatt PW1650, SolarWorld (>100 watts or “Mono/p”) Canadian Solar, CSSP & CSGP, SolarTech (> or = 120 watts).

KITS: End clamps, mid clamps, T-bolts, and flange nuts for one row of modules						PRO-PAK: Clamps with T-bolts and flange nuts				
Modules per row	Clear anodized		Dark bronze anodized		Nominal ship wt. (lbs)	Clamp	Qty	Clear anodized		Nominal ship wt. (lbs)
	Part no.	List price	Part no.	List price				Part no.	List price	
2	320027	\$26.50	320174	\$27.50	1	End	1	320004	\$ 5.24	
3	320035	32.00	320175	33.50	2		20	320015	43.50	2
4	320043	38.00	320176	39.50	2	Mid	1	320008	5.24	
5	320051	42.00	320177	44.00	2		20	320020	48.50	2
6	320059	46.00	320178	47.50	2	Dark bronze anodized Nominal				
7	320065	52.50	320179	54.00	2	Clamp	Qty	Part no.	List price	ship wt. (lbs)
8	320071	57.50	320180	59.50	3	End	1	320173	\$ 5.58	
9	320137	62.50	320181	65.50	3		20	320185	56.50	2
10	320138	67.50	320182	70.50	3	Mid	1	320119	6.81	
11	320139	72.50	320183	76.50	3		20	320084	67.50	2
12	320140	76.50	320184	80.50	3					

E for modules 50–52 mm thick (1.97” - 2.05”)

Such as, BP Solar, Schott Solar, Grundfos GF, Yingli Solar. Suntech ≥ to 260w

KITS: End clamps, mid clamps, T-bolts, and flange nuts for one row of modules						PRO-PAK: Clamps with T-bolts and flange nuts				
Modules per row	Clear anodized		Dark bronze anodized		Nominal ship wt. (lbs)	Clamp	Qty	Clear anodized		Nominal ship wt. (lbs)
	Part no.	List price	Part no.	List price				Part no.	List price	
2	320028	\$26.50	320095	\$27.50	1	End	1	320005	\$ 5.24	
3	320036	32.00	320096	33.50	2		20	320016	43.50	3
4	320044	38.00	320097	39.50	2	Mid	1	320009	5.24	
5	320052	42.00	320098	44.00	2		20	320021	48.50	2
6	320060	46.00	320099	47.50	2	Dark bronze anodized Nominal				
7	320066	52.50	320100	54.00	2	Clamp	Qty	Part no.	List price	ship wt. (lbs)
8	320072	57.50	320101	59.50	3	End	1	320118	\$ 5.58	
9	320141	62.50	320153	65.50	3		20	320082	56.50	3
10	320142	67.50	320154	70.50	3	Mid	1	320120	6.81	
11	320143	72.50	320155	76.50	3		20	320085	67.50	2
12	320144	76.50	320156	80.50	3					

F for modules 45–47 mm thick (1.77” - 1.85”)

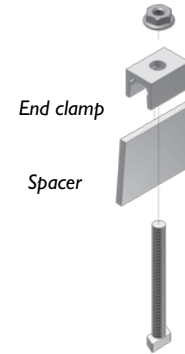
Such as, Mitsubishi, Sharp (>100 watts, excluding ND-N2ECU), SunPower, Sanyo (no lip, not bifacial), Evergreen ES-A, Schuco SPU, Solarfun.

KITS: End clamps, mid clamps, T-bolts, and flange nuts for one row of modules						PRO-PAK: Clamps with T-bolts and flange nuts				
Modules per row	Clear anodized		Dark bronze anodized		Nominal ship wt. (lbs)	Clamp	Qty	Clear anodized		Nominal ship wt. (lbs)
	Part no.	List price	Part no.	List price				Part no.	List price	
2	320029	\$26.50	320102	\$27.50	1	End	1	320006	\$ 5.24	
3	320037	32.00	320103	33.50	2		20	320017	43.50	3
4	320045	38.00	320104	39.50	2	Mid	1	320009	5.24	
5	320053	42.00	320105	44.00	2		20	320021	48.50	2
6	320061	46.00	320106	47.50	2	Dark bronze anodized Nominal				
7	320067	52.50	320107	54.00	2	Clamp	Qty	Part no.	List price	ship wt. (lbs)
8	320073	57.50	320108	59.50	3	End	1	320124	\$ 5.58	
9	320145	62.50	320157	65.50	3		20	320123	56.50	3
10	320146	67.50	320158	70.50	3	Mid	1	320120	6.81	
11	320147	72.50	320159	76.50	3		20	320085	67.50	2
12	320148	76.50	320160	80.50	3					

Top & Bottom Mounting Clamps (continued)

G for Sharp lipped modules
Sharp Solar ND-N2ECU (140W).

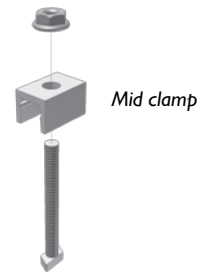
KITS: End clamps, mid clamps, T-bolts, and flange nuts for one row of modules				PRO-PAK: Clamps with T-bolts and flange nuts				
<u>Dark bronze anodized only</u>				<u>Dark Brown Anodized Only</u>				
Modules	Part no.	List price	Nominal ship wt. (lbs)	Clamp	Qty	Part no.	List price	Nominal ship wt. (lbs)
per row				End	1	320007	\$ 5.58	
2	320031	\$27.50	1		20	320083	56.50	2
3	320039	33.50	1	Mid	1	320122	6.81	
4	320047	39.50	1		20	320087	67.50	2
5	320055	44.00	2					
6	320112	47.50	2					
7	320113	54.00	2					
8	320114	59.50	2					
9	320169	65.50	3					
10	320170	70.50	3					
11	320171	76.50	3					
12	320172	80.50	3					



In Size G, end clamps employ a spacer, but are otherwise identical to mid clamps.

H for Sanyo lipped modules
Sanyo HIP/HIT xxx BA3 Not Bifacial.

KITS: End clamps, mid clamps, T-bolts, and flange nuts for one row of modules				PRO-PAK: Clamps with hexhead bolts and flange nuts				
<u>Dark bronze anodized only</u>				<u>Dark Brown Anodized Only</u>				
Modules	Part no.	List price	Nominal ship wt. (lbs)	Clamp	Qty	Part no.	List price	Nominal ship wt. (lbs)
per row				All*	1	320121	\$ 6.81†	
2	320030	\$27.50	1		20	320086	67.50†	2
3	320038	33.50	1					
4	320046	39.50	1					
5	320054	44.00	1					
6	320109	47.50	2					
7	320110	54.00	2					
8	320111	59.50	2					
9	320165	65.50	3					
10	320166	70.50	3					
11	320167	76.50	3					
12	320168	80.50	3					



* In size H, end clamps and mid clamps are identical. Hexhead bolts replace T-bolts.

J for modules 41 – 43 mm thick (1.61” - 1.69”)
Such as, SunWize (>150 watts)

KITS: End clamps, mid clamps, T-bolts, and flange nuts for one row of modules				PRO-PAK: Clamps with T-bolts and flange nuts				
<u>Clear anodized</u>				<u>Clear anodized</u>				
Modules	Part no.	List price	Nominal ship wt. (lbs)	Clamp	Qty	Part no.	List price	Nominal ship wt. (lbs)
per row				End	1	320080	\$ 5.24	
2	320074	\$26.50	1		20	320079	43.50	3
3	320075	32.00	2	Mid	1	320009	\$ 5.24	
4	320076	38.00	2		20	320021	48.50	2
5	320077	42.00	2					
6	320078	46.00	2					
7	320115	52.50	2					
8	320116	57.50	3					
9	320161	62.50	3					
10	320162	67.50	3					
11	320163	72.50	3					
12	320164	76.50	3					

Top & Bottom Mounting Clamps (continued)

K for modules 39–41 mm thick (1.54” - 1.61”)

Such as Evergreen (ES series) (for Evergreen ES-A series see F). Canadian Solar CS6A

KITS: End clamps, mid clamps, T-bolts, and flange nuts for one row of modules						PRO-PAK: Clamps with T-bolts and flange nuts					
Modules per row	Clear anodized		Dark bronze anodized		Nominal ship wt. (lbs)	Clamp	Qty	Clear anodized		Nominal ship wt. (lbs)	
	Part no.	List price	Part no.	List price				Part no.	List price		
2	320209	\$26.50	320222	\$27.50	1	End	1	320220	\$ 5.24		
3	320210	32.00	320223	33.50	2		20	320221	43.50	3	
4	320211	38.00	320224	39.50	2	Mid	1	320008	5.24		
5	320212	42.00	320225	44.00	2		20	320020	48.50	3	
6	320213	46.00	320226	47.50	2	Dark bronze anodized					
7	320214	52.50	320227	54.00	2	Clamp	Qty	Part no.	List price	Nominal ship wt. (lbs)	
8	320215	57.50	320228	59.50	3	End	1	320233	\$ 5.58		
9	320216	62.50	320229	65.50	3		20	320234	56.50	3	
10	320217	67.50	320230	70.50	3	Mid	1	320119	6.81		
11	320218	72.50	320231	76.50	3		20	320084	67.50	3	
12	320219	76.50	320232	80.50	3						

L for Sanyo bifacial modules on shared SolarMount rail

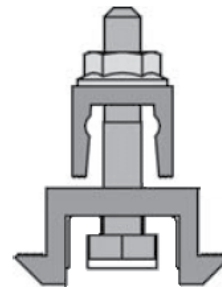
Sanyo HIP/HIT xxx DA3 Bifacial.

KITS: PRO-PAK: Clamps with hex head bolts and flange nuts.

Clear Anodized Only

Clamp	Qty	Part no.	List price	Nominal ship wt. (lbs)
All*	1	320330	\$ 8.45	
	20	320331	72.50	2

* In size L mid clamp and end clamps are identical.
Hex Head bolts replace T-bolts



Bottom Mounting Clips

Clips for all modules with mounting holes in the back of the frame.

Order 4 clips for each module in your array. Clips are packed with stainless steel bolts and flange nuts. See the sizing chart on pages 9-11 for modules that can be used with bottom mounting clips.

Bottom Mounting Clips

Quantity	PV modules to be mounted	Nominal ship wt. (lbs)	Part no.	List price
20	5	1	321002	38.50



RAPIDSTOCK

SolarMount and SunFrame in Bulk

Part no.	Quantity	Description	List price	Part no.	Quantity	Description	List price
310068-125	125	Serrated L-Foot, Clear	\$ 516.00	321001-150	150	Bottom Clip	185.50
310066-125	125	Serrated L-Foot, Dark	540.50	321196-100	100	Lag Bolt 5/16 x 3.5	77.84
310214-050	50	Splice Plate, Clear	660.50	310503-060	60	3" Standoff 2-Piece, Clear	740.00
310231-100	100	SML Splice Bar, Clear	393.00	310504-060	60	4" Standoff 2-Piece, Clear	796.00
310230-050	50	Serrated Splice Bar, Clear	271.00	310506-060	60	6" Standoff 2-Piece, Clear	913.50
310228-050	50	Serrated Splice Bar, Dark	287.00	310507-060	60	7" Standoff 2-Piece, Clear	980.50
320008-100	100	Mid Clamp A,B,C, Clear	236.00	310603-060	60	3" Standoff 2-Piece, Dark	775.00
320009-100	100	Mid Clamp E,F,J,D, Clear	236.00	310604-060	60	4" Standoff 2-Piece, Dark	835.00
320119-100	100	Mid Clamp A,B,C, Dark	326.00	310606-060	60	6" Standoff 2-Piece, Dark	955.00
320120-100	100	Mid Clamp E,F,J, Dark	326.00	310607-060	60	7" Standoff 2-Piece, Dark	\$1,012.00
320122-100	100	Mid Clamp G, Dark	326.00	310009-036	36	3" Standoff Flat-Top Steel	620.00
320121-100	100	Mid Clamp H, Dark	326.00	310010-036	36	4" Standoff Flat-Top Steel	650.00
320003-100	100	End Clamp, C, Clear	211.00	310011-036	36	6" Standoff 2-Piece, Dark	675.00
320004-100	100	End Clamp, D, Clear	211.00	310012-036	36	7" Standoff Flat-Top Steel	745.00
320005-100	100	End Clamp, E, Clear	211.00	310017-036	36	3" Standoff Flange Steel	642.00
320006-100	100	End Clamp, F, Clear	211.00	310018-036	36	4" Standoff Flange Steel	712.00
320002-100	100	End Clamp, B, Clear	211.00	310019-036	36	6" Standoff Flange Steel	762.00
320220-100	100	End Clamp, K, Clear	211.00	310020-036	36	7" Standoff Flange Steel	801.00
320080-100	100	End Clamp, J, Clear	211.00	321162-500	500	SF Cap Screw 1/4" x 3/4", Clear	320.00
320117-100	100	End Clamp, C, Dark	273.00	321163-500	500	SF Cap Screw 1/4" x 1", Clear	352.00
320173-100	100	End Clamp, D, Dark	273.00	321164-500	500	SF Cap Screw 1/4" x 1-1/4", Clear	385.00
320118-100	100	End Clamp, E, Dark	273.00	321156-500	500	SF Cap Screw 1/4" x 3/4", Dark	430.00
320124-100	100	End Clamp, F, Dark	273.00	321157-500	500	SF Cap Screw 1/4" x 1", Dark	464.00
320233-100	100	End Clamp, K, Dark	273.00	321158-500	500	SF Cap Screw 1/4" x 1-1/4", Dark	498.00
				321165-500	500	SF Cap Screw 1/4" x 1-1/2", Dark	431.00
				321165-100	100	SF Cap Screw 1/4" x 1-1/2", Dark	86.65
				321166-500	500	SF Cap Screw 1/4" x 1-1/2", Clear	557.75
				321166-100	100	SF Cap Screw 1/4" x 1-1/2", Clear	108.50

SUNFRAME



WE'VE COMPLETED OUR UPGRADE TO THE MOST INSTALLATION-FRIENDLY SUNFRAME YET. IMPROVED CAP STRIP SCREWS AND CAP STRIPS PREPUNCHED AT 8-INCH INTERVALS TEAM UP WITH OUR NEW THREADED SLOT RAIL TO ENSURE A SOUND, AESTHETICALLY PLEASING INSTALLATION. SUNFRAME SAVES YOU MONEY BY SAVING YOU TIME ON THE JOB SITE. NOTE: DARK BRONZE ANODIZED LOOKS BLACK. CLEAR ANODIZED LOOKS SILVER. PICK THE RAIL AND ACCESSORIES TO MATCH THE COLOR OF YOUR MODULE FRAMES.

SunFrame threaded slot rail


Select finish to match PV module frames.

Part no.	Description	Nominal shipping data		List price
		inches	lbs.	
Dark bronze anodized				
302011	8 ea. 192 in.	195 x 6 x 8	144	\$1,506.00
302012	1 ea. 192 in. (2 rails minimum)	195 x 2 x 3		206.50
302013	8 ea. 96 in.	99 x 6 x 8	72	790.50
302014	1 ea. 96 in.	99 x 2 x 3	10	108.00
Clear anodized				
302015	8 ea. 192 in.	195 x 6 x 8	144	1,307.50
302016	1 ea. 192 in. (2 rails minimum)	195 x 2 x 3		180.50
302017	8 ea. 96 in.	99 x 6 x 8	72	685.50
302018	1 ea. 96 in.	99 x 2 x 3	10	94.50

SUNFRAME


Accessories Price List

Cap strips for 34–36 mm modules (1.34" - 1.42")

C For GE Energy and Kyocera modules. Select finish to match PV module frames. Requires 3/4-inch cap strip screw. 

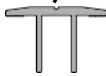
Part no.	Description	Nominal shipping data		List price
		inches	lbs.	
Dark bronze anodized				
321103	8 ea. 192 in.	195 x 2 x 3	42	\$459.00
321132*	1 ea. 192 in.	195 x 2 x 3		63.50
321110	8 ea. 96 in.	99 x 2 x 3	23	244.00
321111	1 ea. 96 in.	99 x 2 x 3	6	33.50
Clear anodized				
321106	8 ea. 192 in.	195 x 2 x 3	42	400.50
321137*	1 ea. 192 in.	195 x 2 x 3		55.00
321112	8 ea. 96 in.	99 x 2 x 3	23	214.50
321113	1 ea. 96 in.	99 x 2 x 3	4	29.50

Cap strips for 38–40 mm modules (1.50" - 1.57")

D For Isofoton, Photowatt (greater than 100 watts), Shell (greater than 100 watts). Requires 3/4-inch cap strip screw. 


Part no.	Description	Nominal shipping data		List price
		inches	lbs.	
Clear anodized				
321107	8 ea. 192 in.	195 x 2 x 3	42	\$400.50
321138*	1 ea. 192 in.	195 x 2 x 3		55.00
321114	8 ea. 96 in.	99 x 2 x 3	23	214.50
321115	1 ea. 96 in.	99 x 2 x 3	6	29.50

Cap strips for 49–51 mm modules (1.93" - 2")

E For BP Solar, select finish to match PV module frame. Use clear for Schott Solar ASE series. Requires 1 1/4-inch cap strip screw. 

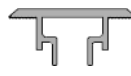
Part no.	Description	Nominal shipping data		List price
		inches	lbs.	
Dark bronze anodized				
321104	8 ea. 192 in.	195 x 2 x 3	45	\$552.00
321134*	1 ea. 192 in.	195 x 2 x 3		76.00
321116	8 ea. 96 in.	99 x 2 x 3	25	290.50
321117	1 ea. 96 in.	99 x 2 x 3	6	40.50
Clear anodized				
321108	8 ea. 192 in.	195 x 2 x 3	45	459.00
321140*	1 ea. 192 in.	195 x 2 x 3		63.50
321118	8 ea. 96 in.	99 x 2 x 3	25	244.00
321119	1 ea. 96 in.	99 x 2 x 3	6	33.50

Cap strips for 45–47 mm modules (1.77" - 1.85")

F Use dark bronze for Sharp ND-167U3A, SunPower SPR200, SPR210. Use clear for Mitsubishi, other Sharp unlicensed modules, SunPower SPR90, Sanyo (not lipped, not bifacial). Requires 1 in. cap strip screw. 


Part no.	Description	Nominal shipping data		List price
		inches	lbs.	
Dark bronze anodized				
321126	8 ea. 192 in.	195 x 2 x 3	45	\$534.50
321133*	1 ea. 192 in.	195 x 2 x 3		73.50
321127	8 ea. 96 in.	99 x 2 x 3	25	284.00
321128	1 ea. 96 in.	99 x 2 x 3	6	39.00
Clear anodized				
321109	8 ea. 192 in.	195 x 2 x 3	45	447.50
321139*	1 ea. 192 in.	195 x 2 x 3		61.50
321120	8 ea. 96 in.	99 x 2 x 3	25	238.00
321121	1 ea. 96 in.	99 x 2 x 3	6	33.00

Cap strips for Sharp lipped modules

G Requires 1-inch cap strip screw. 

Part no.	Description	Nominal shipping data		List price
		inches	lbs.	
Dark bronze anodized				
321105	8 ea. 192 in.	195 x 2 x 3	45	\$621.50
321136*	1 ea. 192 in.	195 x 2 x 3		85.50
321122	8 ea. 96 in.	99 x 2 x 3	25	324.50
321123	1 ea. 96 in.	99 x 2 x 3	6	44.50

Cap strips for Sanyo lipped modules

H Except Bifacial. See L. Requires 3/4-inch cap strip screw. 

Part no.	Description	Nominal shipping data		List price
		inches	lbs.	
Dark bronze anodized				
321129	8 ea. 192 in.	195 x 2 x 3	42	\$569.00
321135*	1 ea. 192 in.	195 x 2 x 3		78.00
321130	8 ea. 96 in.	99 x 2 x 3	23	301.50
321131	1 ea. 96 in.	99 x 2 x 3	6	42.00

*Requires a 2 cap strip and 2 rail minimum order.

Cap strips for 57-60mm modules (2.26" - 2.36")

Sanyo Bifacial. Requires 1½-inch screws
Sharp ND-UIY



Part no.	Description	Nominal shipping data		List price
		inches	lbs.	
Dark bronze anodized				
321174	8 ea. 192 in.	195 x 2 x 3	45	\$590.50
321175	1 ea. 192 in.	195 x 2 x 3		81.35
321176	8 ea. 96 in.	99 x 2 x 3	25	310.15
321177	1 ea. 96 in.	99 x 2 x 3	6	43.35
Clear anodized				
321170	8 ea. 192 in.	195 x 2 x 3	45	\$491.00
321171	1 ea. 192 in.	195 x 2 x 3		68.00
321172	8 ea. 96 in.	99 x 2 x 3	25	261.00
321173	1 ea. 96 in.	99 x 2 x 3	6	36.00

Cap strip screws for threaded slot rail

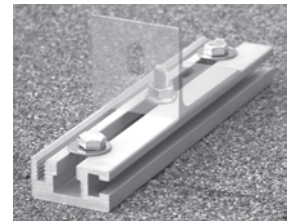
Check cap strip listing to determine correct screw length. Select finish to match rails and cap strips. All are ¼-20 Type F thread-cutting screws, 18-8 stainless steel.

Part no.	Description	Nominal shipping weight (lbs)	List price
¼-inch screws for cap strip sizes C, D, and H			
321153	100 ea., dark	2	\$88.50
321156	10 ea., dark		10.10
321159	100 ea., clear	2	66.00
321162	10 ea., clear		7.47
1-inch screws for cap strip sizes F and G			
321154	100 ea., dark	2	96.00
321157	10 ea., dark		10.70
321160	100 ea., clear	2	72.50
321163	10 ea., clear		8.53
1¼-inch screws for cap strip size E			
321155	100 ea., dark	2	102.50
321158	10 ea., dark		11.70
321161	100 ea., clear	2	79.50
321164	10 ea., clear		9.07
1½-inch screws for cap strip size L			
321166	100 ea., dark	2	108.50
321166	10 ea., dark		12.75
321165	100 ea., clear	2	86.65
321165	10 ea., clear		10.00

Splices for SunFrame rail

Order one splice wherever two segments are to be joined into a single rail.

Part no.	Type	Nom. ship Qty.	wt. (lbs)	List price
Dark Anodized				
310227	Bar w/ hardware	20	10	118.50
310228	Bar w/ hardware	1	1	12.77
Clear Anodized				
310229	Bar w/ hardware	20	10	112.00
310230	Bar w/ hardware	1	1	12.58



L-foot adjusting sliders

Includes 2 lag bolts with flat washers and s/s footing bolt with flange nut.

Part no.	Description	Nominal shipping data		List price
		inches	lbs.	
310223	1 ea., mill finish		1	\$ 15.20
310224	20 ea., mill finish	11 x 9 x 4	18	288.50



End caps for rails

UV resistant plastic, with matching screws.

Part no.	Description	Nominal shipping weight (lbs)	List price
310225	2 ea., black		12.38
310226	20 ea., black	1	\$64.50

Serrated L-feet

Select finish to match rails. Includes s/s bolts and flange nuts. Lag bolts are not included.

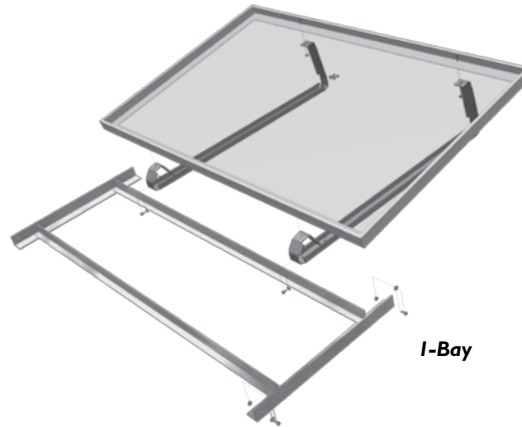
Part no.	Description	Nominal shipping weight (lbs)	List price
310065	20 ea., dark bronze	5	\$89.00
310066	1 ea., dark bronze		5.75
310067	20 ea., clear	5	85.00
310068	1 ea., clear		5.50

RAPIDRAC G10

Price List: RapidRac™

Pricing is the same for all part numbers.

Description	ship wt. (lbs)	Nominal List price
1-Bay RapidRac™ (frame only)	8	\$ 99.00
1-Bay RapidRac™ (w/ module mount)	12	198.00



We custom make RapidRac to the exact specifications of the module you will be racking. Every RapidRac part number you supply must have the correct four (4) digit suffix as that is what identifies the module. In order to get that suffix precisely correct, we have two (2) options:

Option A – Ahead of your order, contact Unirac Order Entry and send the module data sheet. Your Order Entry contact will respond to you with the proper suffix to order.

Option B – Send in your order with part number and the suffix you believe to be right (from the Excel price list available only to distributors) and the module data sheet. We'll check it and Order Entry will get back to you, requiring you to change your PO if your suffix is wrong.

In summary, all RapidRac orders must be accompanied by a module data sheet commonly found at module manufacturer's website. The RapidRac produced will be matched to the data sheet you submit to us, so be sure to send precisely the right one

RAPIDRAC G10

RapidFoot Attachment Option Price List

Price List: RapidFoot, hardware and accessories

Part no.	Description	Nominal ship wt. (lbs)	List price
310370	RapidFoot assembly	5	\$66.50

Flashings for RapidFoot

990120	Galvalume flashing #1	1	6.56
990160	Patch, EPDM, Blk	1	3.19
990161	Patch, EPDM, Blk, Peel & Stick	1	6.68

DPI Screws (14 gauge and down, wood or metal)

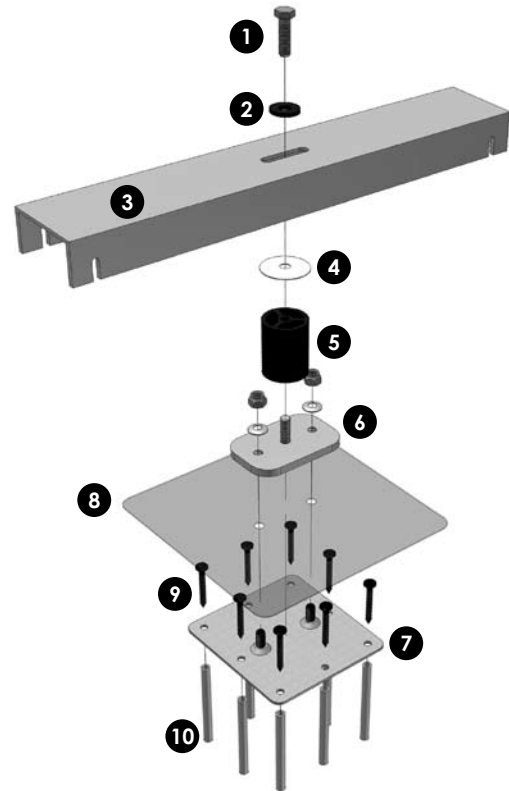
<i>25 Pack:</i>			
990420	Concealor Screw DP1 - 1 1/2"	2	5.97
990421	Concealor Screw DP1 - 2"	2	6.61
990422	Concealor Screw DP1 - 3"	2	8.64
990423	Concealor Screw DP1 - 4"	2	10.70
990424	Concealor Screw DP1 - 4 1/2"	2	12.10
990425	Concealor Screw DP1 - 5"	2	13.50
990426	Concealor Screw DP1 - 6"	2	16.50
990427	Concealor Screw DP1 - 7"	2	18.90
<i>100 Pack:</i>			
990430	Concealor Screw DP1 - 1 1/2"	5	24.00
990431	Concealor Screw DP1 - 2"	5	26.50
990432	Concealor Screw DP1 - 3"	5	34.50
990433	Concealor Screw DP1 - 4"	5	42.00
990434	Concealor Screw DP1 - 4 1/2"	5	48.50
990435	Concealor Screw DP1 - 5"	5	54.00
990436	Concealor Screw DP1 - 6"	5	66.00
990437	Concealor Screw DP1 - 7"	5	75.50

DP4 Screws (12 gauge and down, metal)

<i>25 Pack:</i>			
990400	Concealor Screw DP4 - 1 3/8"	2	13.00
990401	Concealor Screw DP4 - 2 3/4"	2	13.33
990402	Concealor Screw DP4 - 3 3/4"	2	14.93
990403	Concealor Screw DP4 - 4 3/4"	2	17.92
990404	Concealor Screw DP4 - 5 3/4"	2	19.41
990405	Concealor Screw DP4 - 6 3/4"	2	21.00
990406	Concealor Screw DP4 - 7 3/4"	2	22.50
<i>100 Pack:</i>			
990410	Concealor Screw DP4 - 1 3/8"	5	51.50
990411	Concealor Screw DP4 - 2 3/4"	5	53.50
990412	Concealor Screw DP4 - 3 3/4"	5	59.50
990413	Concealor Screw DP4 - 4 3/4"	5	71.50
990414	Concealor Screw DP4 - 5 3/4"	5	77.50
990415	Concealor Screw DP4 - 6 3/4"	5	83.00
990416	Concealor Screw DP4 - 7 3/4"	5	90.50

Accessories

310450	Ferrules #1, 4 ft.	1	22.50
310440	Anchors #14 - 25 pack	6	16.20
310445	Anchors #14 - 100 pack	22	64.50



RapidFoot:

1. 3/8" x 1-1/4" Bolt
2. 3/8" x 1/8" x 1-1/2" Washer
3. Clamp Bar
4. EPDM Washer
5. Standoff
6. Top Plate
7. Base Plate

Accessories (sold separately):

8. Flashing
9. Concealor Screw
10. Ferrules

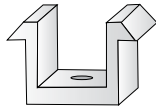
(Note: For concrete roofs, Scru-lead anchors must be used.)

U-LA

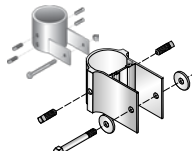
Price List



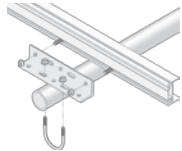
End clamp



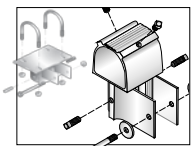
Mid Clamp



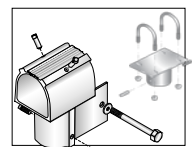
Slider—Aluminum (right) or steel options



Rail mounting bracket



Front leg cap — Aluminum (left) or steel options



Rear leg cap — Aluminum (left) or steel options

Module fasteners

Clear anodized aluminum, unless noted otherwise

Item no.	Description	Nominal shipping weight	List price
SolarMount End Clamps with T-bolts and flange nuts			
320012	20 ea., size A	6 lbs.	\$43.50
320013	20 ea., size B	6 lbs.	43.50
320014	20 ea., size C	6 lbs.	43.50
320015	20 ea., size D	6 lbs.	43.50
320016	20 ea., size E	6 lbs.	43.50
320017	20 ea., size F	6 lbs.	43.50
320083	20 ea., size G, dark bronze	6 lbs.	56.50
320079	20 ea., size J	6 lbs.	43.50
SolarMount Mid Clamps with T-bolts and flange nuts			
320020	20 ea., size A-B-C	6 lbs.	48.50
320021	20 ea., size D-E-F-J	6 lbs.	48.50
320086	20 ea., size H, dark bronze	6 lbs.	67.50
320087	20 ea., size G, dark bronze	6 lbs.	67.50
Other Module Fasteners with s/s nuts and bolts			
321002	20 ea., SolarMount bottom mounting clip	5 lbs.	38.50
321201	1 ea., junction plate, portrait mount, mill finish	0.5 lbs.	6.67

Rail Mounting and Pipe Structure Components

Item no.	Description	Nominal shipping weight	List price
2 inch pipe caps, feet and sliders, zinc plated steel			
330001	1 ea., front cap	4 lbs.	\$ 67.50
330002	1 ea., rear cap	4 lbs.	52.00
330004	1 ea., threaded foot	4 lbs.	39.50
330005	1 ea., slider, 1 flange	2 lbs.	39.50
3 inch pipe caps, feet and sliders, zinc plated steel			
330010	1 ea., front cap	5 lbs.	95.00
330011	1 ea., rear cap	5 lbs.	79.00
330013	1 ea., threaded foot	5 lbs.	84.50
330014	1 ea., slider, 1 flange	4 lbs.	66.00
2 inch pipe caps and sliders, mill finish aluminum			
330019	1 ea., front cap	2 lbs.	41.00
330020	1 ea., rear cap	2 lbs.	41.00
330021	1 ea., slider	1 lbs.	19.50
2 inch braces and brackets, mill finish aluminum			
330101	1 ea., 7 ft. brace	8 lbs.	65.00
330102	1 ea., 10.5 ft. brace	12 lbs.	94.00
330103	1 ea., 14 ft. brace	16 lbs.	123.00
330104	1 ea., rail mounting bracket	2 lbs.	18.08
3 inch braces and brackets, mill finish aluminum			
330105	1 ea., 7 ft. brace	13 lbs.	103.50
330106	1 ea., 10.5 ft. brace	19 lbs.	150.00
330107	1 ea., 14 ft. brace	25 lbs.	197.50
330108	1 ea., rail mounting bracket	2 lbs.	21.12

POLEMOUNTS

Design Wind Pressures for PV PoleTops

To ensure the structural integrity and to provide the installer with an accurate wind pressure rating, we have thoroughly computer analyzed and laboratory tested our PV PoleTops. The resulting Design Wind Pressures—maximum allowable wind pressure in pounds per square foot (psf)—appear after model numbers on the sizing chart on pages 38–40.

Each rating applies to the mounting pole in addition to the PV PoleTops rack. Where our rating is below 50 psf, it is in most cases because our analysis predicts that the mounting pole will buckle above the rated load.

Your PV panels may carry a lower wind load rating. The manufacturers’ rating is typically 50 psf.

The ratings on our sizing chart were calculated based on the following assumptions:

- Manufacturer, model, and quantity of modules as indicated on the sizing chart;
- A tilt angle of 40 degrees from the horizontal for Series 5000 to 5003, 55 degrees for Series 5014/5034;
- A mounting pole of Schedule 40 steel pipe, 5 feet above ground for Series 5000 to 5003, 6 feet for Series 5014/5034;
- Installation performed in accordance with applicable installation instructions.

What Design Wind Pressure is required for your site?

Start with the basic wind speed at the site. For this figure, consult a local professional engineer or the

building authority with jurisdiction over the site. In the United States, consult basic wind speed information in the building code appropriate to your site, for example, ASCE 7, the California Building Code, the International Building Code, or the Uniform Building Code. These codes also define wind exposure categories.

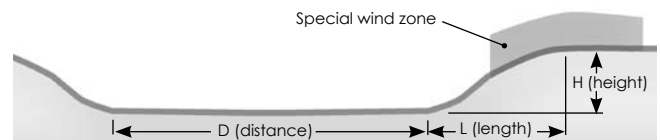
To determine your wind load, apply your basic wind speed and exposure category to the “Design Wind Pressures” table on this page. For example, if your basic wind speed is 100 miles per hour and your site fits Exposure Category C, you will require a rack with a Design Wind Pressure of 26 psf or greater.

Special terrain can experience extra high wind loads and require further analysis to determine an installation’s suitability: canyons or gaps where wind may be funneled at high speed and the upper half of some isolated hills, ridges, and escarpments. (For an example, see the “Special terrain” illustration on this page). Unirac warrants installations on “special terrain” only if a professional engineer or UniRac has determined that the wind loads at the particular site fall within published design load limits.

Unirac can provide additional help. If requirements or conditions at your site deviate significantly from the assumptions listed above, contact our Customer Service Department. We’ll input your parameters through our proprietary analysis program to quickly determine your wind load rating. We’ll put it in writing.

Design Wind Pressures (psf)

Exposure category	Basic wind speed (mph)				
	90	100	110	120	130
B	14	18	21	25	30
C	21	26	32	38	44
D	26	32	38	46	53



Special terrain: The upper half of a hill constitutes a special wind zone if the slope ($H \div L$) is greater than 0.1 and if distance (D) to similar terrain is greater than two miles or 100 times the height of the hill (H). Contact a professional engineer or Unirac.

PoleMounts™

PV POLETOPS

Sizing Charts & Price Lists

Configurations: PV PoleTops® Single Row



Series 5000
with SolarMount® standard rails for 2.5" (65 mm) Schedule 40 or 80 steel pole, outside dia. 2.875" (73.0 mm)



Series 5001
with SolarMount® HD (heavy duty) rails for 3" (80 mm) Schedule 40 or 80 steel pole, outside dia. 3.500" (88.9 mm)



Series 5002
with SolarMount® HD (heavy duty) rails for 4" (100 mm) Schedule 40 or 80 steel pipe, outside dia. 4.500" (114.3 mm)

Configurations: PV PoleTops® Double Row



Series 5003
with SolarMount® HD (heavy duty) rails for 4" (100 mm) Schedule 40 or 80 steel pole, outside dia. 4.500" (114.3 mm)

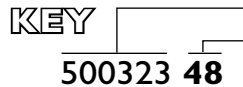


Series 5014/5034
with SolarMount® HD (heavy duty) rails for 6" (150 mm) Schedule 40 or 80 steel pole, outside dia. 6.625" (168.3 mm)

For larger pole sizes:

Series 5000—See "U-bolt Substitution," p. 46.

Series 5014/5034—See reducer for 8-inch (200 mm) Schedule 40 or 80 steel pole, outside diameter 8.625 inches (219.1 mm), "Accessories," p. 43.



Rack item no. (series no. = first 4 digits).

Design Wind Pressure, pounds per square foot (psf). Where multiple selections are listed, choose the rack item number with the lowest design wind pressure acceptable at your site. **Note: Your PV modules may carry a lower Design Wind Pressure rating.** See "Design Wind Pressures for PV PoleTops" on the facing page.

Sizing Chart: PV PoleTops®

Select rack based on manufacturer, model number, and quantity of the modules you plan to mount.

Module	Number of modules to be mounted							
	1	2	3	4	6	8	10	12
AEE								
AE80J	500024 115	500016 58	500117 53	500123 40	500350 33	500337 25 501434 25	501438 54	501478 17
BP Solar								
BP350	500024 165	500016 83	500105 75	500110 56	500323 48	500328 36	501493 27	501429 22
BP365	500023 133	500029 67	500103 60	500108 56	500321 38	500326 28	501423 29	501427 24
BP380, -485	500024 114	500016 57	500105 52	500110 39	500323 32	500328 25 501421 33	501493 27	501429 22
BP3125	500044 46	500129 50	500132 33	500229 31	500315 20 501457 19	501463 14		
BP3150, -3160, -4175, -SX160B, -SX170B	500045 37	500130 39	500226 34	500340 23 501453 24	501459 16			
Canadian Solar								
CS5F-12, CS5E-15, CS5E-18, CS5E-20	500023	500025	500027	500031	500107	500220	500230	500351
CS6D-60, CS6D-65	500007	500103	500108	500225	500326	501425	503400	
CS5C-80, CS5C-90	500034	500041	500118	500124	500334	500309	501438	501443
CS6A-160, CS6A-170, CS6A-180	500039	500131	500243	500342				

Sizing Chart: PV PoleTops® (continued)

Module	Number of modules to be mounted							
	1	2	3	4	6	8	10	12
Evergreen								
EC-110-GL, EC-115-GL, EC-120-GL	500036 56	500114 49	500121 32	500224 31	500342 19	501462 14		
ES-170, ES-180, ES-190, ES-195	500039	500120	500230	500341				
ES-A-190, ES-A-195, ES-A-200, ES-A-205, ES-A-210	500039	500131	500241	500315				
GE Energy								
GEPV045, -050	500007 131	500001 66	500108 59	500146 44	500326 37	500330 28 501425 27	503400 22	
GEPV072, -085	500024 117	500030 59	500117 54	500122 40	500350 33	500336 25 501433 26	501437 20	501441 17
GEPV100, -110	500007 76	500133 52	500136 34	500225 32	500313 21 501432 27	501437 20	501444 16	
GEPVp130	500007 75	500133 51	500136 34	500225 32	500313 21 501432 27	501437 20	501444 16	
GEPV173	500029 52	500121 35	500232 30	500335 22 501432 27	501439 18			
GEPVp185, -200	500029 51	500121 34	500232 29	500335 21 501432 27	501440 18			
Isofoton								
I-100	500036 68	500114 59	500121 39	500224 37	500335 25 501432 27	501437 20	501443 16	
I-150S	500041 45	500122 40	500233 33	500336 25 501433 26	501441 17			
Kaneka								
G-EA060, G-SA060	500014 49	500131 52	500241 45	500335 33	501439 18			
Kyocera								
KC40T, KC50T, KC65T, KC85T, KC85TS	500025	500031	500107	500113	500325	500330	501429	501430
KCI130GT, KCI130TM	500043	500128	500131	500228	500342	501462		
KDI130GX-LP, KDI135GX-LP	500044	500129	500132	500229	500315	501463		
KCI175GT	500039	500132	500243	500313	501440			
KDI180GX-LP	500039	500132	500243	500315				
KC200GT, KD205GX-LP, KD210GX-LP	500014	500132	500243	500315				
Mitsubishi								
PVMFI10EC3, -120EC3	500043 51	500128 53	500131 35	500228 35	500342 23 501456 19	501462 14		
PVMFI25EA2LF, -130A2LF	500045 46	500130 51	500140 33	500340 31 501453 24	500301 21 501460 15			
PVMFI60EB3, -165EB3, -170EB3	500045 37	500130 36	500214 33	500340 23 501453 24	501460 15			
Photowatt								
PW6-110, -123	500043 49	500128 54	500131 35	500228 34	500342 22 501456 19	501462 14		
PW750	500035 84	500042 42	500119 49	500145 37	500334 31 501433 26	500309 23 501435 24	503403 19	501444 16
PWI650	500041 43	500123 38	500233 31	500337 24 501434 25	501443 16			

PoleMounts™

Sizing Chart: PV PoleTops® (continued)

Module	Number of modules to be mounted							
	1	2	3	4	6	8	10	12
Sanyo*								
HIP-xxxBA3	500002*	500143*	500240*		501495*			
HIT Power xxx/ HIP-xxx BA19	510029	500119	500225	500335	501437			
HIP-xxxDA3	Bifacials cannot be pole mounted							
Schott Solar								
ASE300-DGF 50	500128 45	500227 26						
Sharp								
ND-162UI & UIF, ND-167UIF,ND167U3 & U3A, ND-N0ECU, ND-N2ECU, ND- N2ECUF,ND-162UIY, ND167UI,ND-167UIY, ND-176UIY	500039	500136	500232	500313	501440			
ND-187UI & UIF, ND-198UIF,ND-200UI & UIF,ND-205UI, ND-208UI & UIF & U2, ND-216UIF & U2	500039	500132	500243	500315				
ND-60RUI, ND-62RUI & RU2	500023	500027	500031	500117	500127	500233	500315	500301
ND-123-UJF,ND-L3EJE, ND-L3EJEA	500044	500129	500132	500229	500315			
NE-170UI-VE, NT-175UI-VE, NT-180UI-VE	500014	500131	500227	500348	501489			
NE80-EJE, NE-80EJEA	500034	500041	500117	500123	500233	500337	501494	501478
ND-200UIF-VE (& UI-VE), ND-205UI-VE, ND-208UIF (& UI-VE & U2-VE), ND-216UIF-VE (& U2-VE), ND-220UIF (& UIF-VE & U2 & U2- VE), ND-224UIF (&UIF-VE & U2 & U2-VE)	500014	500132	500243	500315				
NE-160UI, NE-170UI, NT-175UI, NT-180UI	500027	500106	500146	500348	501489			
SolarWorld (Shell)								
80P, 85P	500024 117	500030 59	500117 54	500122 40	500350 33 501496 34	500336 25 501433 26	501437 20	501441 17
165P,-PC, 175P,-PC	500027 56	500118 38	500237 32	500348 21 501484 23	501489 15			
SunPower								
SPR90, -95	500024 85	500030 68	500117 62	500122 46	501485 40	500327 29 501434 25	501425 27	501428 23
SPR200BLK, -210, -215BLK, -220	500038 47	500117 41	500214 34	500340 24 501453 24	501460 15			

* Use models listed in this row only for Sanyo modules. Top mounting clamp sets are substituted to accommodate Sanyo modules, which have no mounting holes.

Sizing Chart: PV PoleTops® (continued)

Module	Number of modules to be mounted							
	1	2	3	4	6	8	10	12
Suntech								
STP060	500007 145	500001 72	500108 66	500146 49	500326 42 501491 36	501425 27	503400 22	
STP085S	500024 115	500016 57	500118 52	500123 39	500334 33 501431 33	500337 25 501434 25	501494 20	501443 16
STP110-12Tb, -115-12/Tc, -120,-130,-140	500037 58	500133 51	500122 33	500235 31	500349 21 501481 18	501463 14		
STP110-24/Ab, STP175-24/Ab-I	500038 46	500118 40	500127 26 500237 33	500340 23 501453 24	501460 15			
SunWize								
SW50A, SW55A, SW60A	500007	500031	500119	500126	500326	500330	501427	
SW50C, SW55C, SW60C	500023	500029	500103	500108	500321	500326	500330	501427
SW75A, SW80A	500035	500114	500119	500139	500335	500352	501440	
SW90C, SW100C	500034	500041	500118	500124	500348	500317		
SW150	500038	500117	500126	500339	500301			
SW170, SW175, SW180	500038	500117	500127	500233	500301			
Uni-Solar								
ES62T	500038 58	500118 51	500139 33	500350 32 501431 33	500352 21 501436 22	501478 17		
US64	500037 57	500135 50	500124 33	500339 31 501452 24	500317 20 501488 17			
Yingli								
YL80,-85	500024 117	500016 59	500106 54	500110 40	500351 33	500328 25 501421 33	501493 27	501429 22

Price List: Series 5003 Double Row PV PoleTops®



Series 5003
with SolarMount®
HD (heavy duty)
rails for 4" (100 mm)
Schedule 40 or 80
steel pole, outside
dia. 4.500" (114.3
mm)

Item number	Rail / X-tube length	Module bolt sets	Shipping		List price
			Lbs	Inches	
500301	96"/102"	6 68	106x7x4	\$690.00	
500309	90"/84"	8 63	94x7x4	633.50	
500313	80"/84"	6 59	88x7x4	601.50	
500315	80"/102"	6 63	106x7x4	639.00	
500317	88"/102"	6 66	106x7x4	664.50	
500321	60"/72"	6 49	76x7x4	500.50	
500323	64"/72"	6 51	76x7x4	513.00	
500325	78"/72"	6 55	82x7x4	558.00	
500326	80"/72"	8 56	84x7x4	564.50	
500327	84"/72"	8 57	88x7x4	577.00	
500328	86"/72"	8 58	90x7x4	583.50	
500330	106"/72"	8 63	108x7x4	635.50	
500334	68"/84"	6 56	88x7x4	563.00	

Item number	Rail / X-tube length	Module bolt sets	Shipping		List price
			Lbs	Inches	
500335	78"/84"	6 59	88x7x4	\$595.00	
500336	84"/84"	8 61	88x7x4	614.50	
500337	86"/84"	8 61	90x7x4	621.00	
500339	62"/102"	4 57	106x7x4	581.50	
500340	64"/102"	4 58	106x7x4	587.50	
500341	76"/102"	6 62	106x7x4	626.00	
500342	78"/102"	6 62	106x7x4	632.50	
500347	70"/102"	6 60	106x7x4	607.00	
500348	66"/102"	4 59	106x7x4	594.00	
500349	82"/102"	6 64	106x7x4	645.50	
500350	64"/84"	6 54	88x7x4	550.50	
500351	68"/72"	6 52	76x7x4	526.00	
500352	94"/84"	6 64	98x7x4	646.50	

Price List: Series 5014/5034 Double Row PV PoleTops® with High Wind Brace



Series 5014/5034
with SolarMount®
HD (heavy duty)
rails for 6" (150 mm)
Schedule 40 or 80
steel pole, outside
dia. 6.625" (168.3
mm)

Item number	Rail / X-tube length	Module bolt sets	Shipping†		List price
			Lbs	Inches	
501404†	76"/102"	4 92	106x7x6	\$1,072.50	
501420†	84"/72"	8 96	88x7x6	944.00	
501421†	86"/72"	8 87	89x7x6	951.50	
501423†	100"/72"	10 94	103x7x6	1,003.50	
501425†	106"/72"	10 97	109x7x6	1,024.00	
501427	120"/72"	12 102	123x7x6	1,078.50	
501428	126"/72"	12 104	129x7x6	1,101.00	
501429	130"/72"	12 106	133x7x6	1,115.50	
501430	156"/72"	12 114	159x7x6	1,213.00	
501431†	66"/84"	6 85	88x7x6	898.00	
501432†	90"/84"	6 89	88x7x6	950.50	
501433†	84"/84"	8 90	87x7x6	965.50	
501434†	86"/84"	8 91	89x7x6	973.00	
501435†	90"/84"	8 95	92x7x6	987.50	
501437†	106"/84"	10 97	109x7x6	1,047.50	
501438	110"/84"	10 101	113x7x6	1,062.50	
501439	116"/84"	6 103	119x7x6	1,085.00	
501440	118"/84"	8 104	121x7x6	1,092.50	
501441	126"/84"	12 108	129x7x6	1,122.00	
501443	130"/84"	12 109	133x7x6	1,137.00	
501444	134"/84"	12 111	135x7x6	1,152.00	
501452†	62"/102"	4 87	106x7x6	904.50	
501453†	64"/102"	4 88	106x7x6	912.00	
501454†	70"/102"	6 90	106x7x6	934.50	
501456†	78"/102"	6 94	106x7x6	964.50	

Item number	Rail / X-tube length	Module bolt sets	Shipping†		List price
			Lbs	Inches	
501457†	80"/102"	6 93	83x7x6	\$ 971.50	
501458†	92"/102"	8 97	105x7x6	1,016.50	
501459†	94"/102"	6 98	105x7x6	1,024.00	
501460†	96"/102"	6 99	105x7x6	1,031.50	
501461†	102"/102"	8 101	105x7x6	1,054.00	
501462†	104"/102"	8 102	107x7x6	1,061.50	
501463†	108"/102"	8 103	111x7x6	1,076.50	
501478	128"/84"	12 109	131x7x6	1,129.50	
501481†	82"/102"	6 96	106x7x6	979.00	
501484†	66"/102"	4 87	106x7x6	919.50	
501485†	64"/72"	6 77	76x7x6	869.50	
501486†	78"/72"	6 84	82x7x6	921.50	
501487*	144"/84"	8*	119	147x7x6	1,189.50
501488†	88"/102"	6 99	106x7x6	1,001.50	
501489†	98"/102"	6 102	101x7x6	1,039.00	
501491†	80"/72"	6 85	84x7x6	929.00	
501493	108"/72"	10 98	111x7x6	1,033.50	
501494	108"/84"	10 102	111x7x6	1,055.00	
501495*	108"/84"	6*	101	111x7x6	1,055.00
501496†	64"/84"	6 81	88x7x6	890.50	
501498†	74"/84"	13 85	88x7x6	928.00	
Series 5014 continues as Series 5034					
503400	132"/72"	10 110	135x7x6	1,123.00	
503403	112"/84"	10 104	115x7x6	1,070.00	

* For use with Sanyo modules only. Top mounting clamp sets are substituted to accommodate the listed number of Sanyo modules.

† May ship via UPS at customer request. UPS shipments will be divided into two boxes in addition to the hardware box. Total weight remains approximately as listed.

‡ Series 5014 racks include a separate hardware box (23 lbs., 8 x 8 x 8 inches) in addition to the listed shipping box.

Price List: Series 5000 Single Row PV PoleTops®



Series 5000

with SolarMount® standard rails for 2½" (65 mm) Schedule 40 or 80 steel pole, outside dia. 2.875" (73.0 mm)

Adapt your Series 5000 rack to a larger pole size with U-bolt substitution.

See "U-bolt Substitution" prices on page 11.

Item number	Rail/channel length	Module bolt sets	Shipping		List price
			Lbs	Inches	
500001	54"/24"	2	12	55x4x3	\$170.50
500002*	38"/24"	1*	10	39x4x3	153.50
500007	28"/24"	1	9	29x4x3	143.00
500014	40"/40"	1	12	41x4x3	161.00
500016	44"/24"	2	11	45x4x3	160.00
500023	20"/24"	1	9	25x4x3	134.50
500024	22"/24"	1	9	25x4x3	136.50
500025	26"/24"	1	9	27x4x3	141.00
500027	34"/24"	1	10	35x4x3	149.50
500029	40"/24"	2	11	41x4x3	155.50
500030	42"/24"	2	11	43x4x3	158.00
500031	52"/24"	2	12	51x4x3	168.50

Item number	Rail/channel length	Module bolt sets	Shipping		List price
			Lbs	Inches	
500034	22"/32"	1	10	33x4x3	\$139.50
500035	24"/32"	1	10	33x4x3	142.00
500036	26"/32"	1	10	33x4x3	144.00
500037	30"/32"	1	11	33x4x3	148.50
500038	32"/32"	1	11	33x4x3	150.40
500039	40"/32"	1	12	41x4x3	159.00
500041	44"/32"	2	12	45x4x3	163.00
500042	46"/32"	2	12	47x4x3	165.50
500043	26"/40"	1	12	41x4x3	146.00
500044	28"/40"	1	12	41x4x3	148.50
500045	32"/40"	1	12	41x4x3	152.50

Price List: Series 5001 Single Row PV PoleTops®



Series 5001

with SolarMount® HD (heavy duty) rails for 3" (80 mm) Schedule 40 or 80 steel pole, outside dia. 3.500" (88.9 mm)

Item number	Rail/X-tube length	Module bolt sets	Shipping		List price
			Lbs	Inches	
500103	60"/24"	3	21	64x5x4	\$274.00
500105	64"/24"	3	22	68x5x4	280.50
500106	66"/24"	3	23	70x5x4	283.50
500107	78"/24"	3	25	82x5x4	303.00
500108	80"/24"	4	25	84x5x4	306.00
500110	86"/24"	4	27	90x5x4	315.50
500113	104"/24"	4	31	108x5x4	344.50
500114	52"/32"	2	21	56x5x4	272.00
500117	64"/32"	3	22	66x5x4	291.00
500118	66"/32"	3	24	70x5x4	294.50
500119	70"/32"	3	25	74x5x4	301.00
500120	76"/32"	3	26	80x5x4	310.50
500121	78"/32"	3	26	82x5x4	313.50
500122	84"/32"	4	27	88x5x4	319.00
500123	86"/32"	4	28	90x5x4	322.00
500124	88"/32"	4	29	92x5x4	326.50

Item number	Rail/X-tube length	Module bolt sets	Shipping		List price
			Lbs	Inches	
500126	92"/32"	4	30	96x5x4	\$333.00
500127	98"/32"	3	31	102x5x4	342.50
500128	52"/40"	2	22	56x5x4	282.50
500129	54"/40"	2	23	58x5x4	286.00
500130	64"/40"	2	23	66x5x4	302.00
500131	78"/40"	3	27	82x5x4	319.00
500132	80"/40"	3	27	84x5x4	322.00
500133	54"/32"	2	20	58x5x4	275.00
500135	60"/32"	2	22	64x5x4	285.00
500136	80"/32"	3	26	84x5x4	317.00
500139	94"/32"	3	28	98x5x4	336.00
500140	96"/40"	3	29	100x5x4	347.50
500143*	74"/32"	2*	26	78x5x4	307.00
500145	90"/32"	4	30	94x5x4	329.50
500146	106"/24"	4	31	106x5x4	347.50

Price List: Series 5002 Single Row PV PoleTops®



Series 5002

with SolarMount® HD (heavy duty) rails for 4" (100 mm) Schedule 40 or 80 steel pole, outside dia. 4.500" (114.3 mm)

Item number	Rail/X-tube length	Module bolt sets	Shipping		List price
			Lbs	Inches	
500214	96"/40"	3	40	100x7x4	\$486.50
500220	98"/24"	3	37	102x7x4	447.00
500223	102"/32"	4	39	106x7x4	474.50
500224	104"/32"	5	40	108x7x4	478.00
500225	106"/32"	3	41	110x7x4	481.00
500226	94"/40"	3	37	98x7x4	483.00
500227	102"/40"	4	39	106x7x4	496.00
500228	104"/40"	4	40	108x7x4	499.00
500229†	108"/40"	4	41	110x7x4	505.50

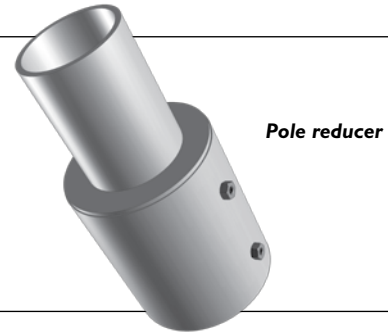
Item number	Rail/X-tube length	Module bolt sets	Shipping		List price
			Lbs	Inches	
500230†	114"/32"	3	42	118x7x4	\$494.00
500232†	118"/32"	3	43	122x7x4	500.50
500233†	130"/32"	3	46	132x7x4	519.50
500235†	108"/32"	4	41	112x7x4	484.50
500236	94"/32"	3	37	98x7x4	462.00
500237	98"/32"	3	39	104x7x4	468.50
500240*†	108"/32"	3*	41	112x7x4	484.50
500241†	114"/40"	3	43	118x7x4	515.00
500243†	118"/40"	3	44	122x4x4	521.50

* For use with Sanyo modules only. Top mounting clamp sets are substituted to accommodate the listed number of Sanyo modules.

† Ships via truck freight only; all others may ship UPS.

Accessories

Item number	Description	Shipping wt.	List price
321218	Clips and hardware to mount one extra module	1 lb.	\$ 9.83
990204	Convert rack, place 3-inch model on 4-inch (100 mm) Schedule 40/80 pole, O.D. 4.500 inches (114.3 mm)		69.00
990301	Pole reducer, place 4-inch model on 6-inch (150 mm) Schedule 40/80 pole, O.D. 6.625 inches (168.3 mm)	18 lbs.	165.50



Pole reducer

PV POLESIDES

Sizing Charts & Price Lists



Series 4000
for 2" (50 mm) Schedule 40 or 80 steel pole, outside dia. 2.375" (60.3 mm)



Series 4001
with SolarMount® standard rails for 2.5" (65 mm) Schedule 40 or 80 steel pole, outside dia. 2.875" (73.0 mm)



Series 4002
with SolarMount® standard rails for 2.5" (65 mm) Schedule 40 or 80 steel pole, outside dia. 2.875" (73.0 mm); 3" (80 mm) Schedule 40 or 80 steel pole, outside dia. 3.500" (88.9 mm); or 4" (100 mm) Schedule 40 or 80 steel pole, outside dia. 4.500" (114.3 mm)

The Price List for Series 4002 lists pole sizes for each model. See page 46.

Adapt your rack to different pole sizes with U-bolt substitution. Series 4011 and 4012 racks may go on 1.5-inch Schedule 40 or 80 poles. Series 4000 to 4002 racks may go only on larger pipes.

See "U-bolt Substitution" prices on p. 46.

Sizing Chart: Adjustable Tilt PV PoleSides™

Select rack based on manufacturer, model number, and quantity of the modules you plan to mount.

Module make and model	Number of modules to be mounted			
	1	2	3	4
AEE				
AE5G, AE5/6G	400002	400011		
AE10G	400006			
AE20G	400024	400263		
AE85J	400111	400211	400250	400227
BP Solar				
BPSX5M, -10M	400006			
BPSX10U	400005	400027		
BPSX20M, -20U, -30M, -30U	400021	400208		
BP340	400027	400211	400218	400227
BP350	400026	400211	400218	400227
BP365	400101	400208	400216	400223
BP380, -485	400111	400211	400218	400227
BP3125	400236	400233	400224	400232
BP3150, -3160, -4175; BPSX160B, -170B	400207	400219	400230	
Evergreen				
EC110, -115, -120	400204	400212	400222	400231
ES170-RL, -180RL, -190RL	400209	400242		
GE Energy				
GEPV030	400026	400251		
GEPV045, -050	400107	400213	400223	400229
GEPV072, -085	400111	400251	400218	400225
GEPV100, -110	400235	400213	400223	400229
GEPvPI30	400235	400243	400223	400229
GEPV173	400208	400223		
GEPvPI85, -200	400208	400223		
Isofoton				
I-100	400204	400212	400222	400231
I-150S	400210	400226		
IS-150	400207	400244	400228	
Kaneka				
G-EA060, G-SA060	400248	400245		
Kyocera				
KS-5, KS-10, KS-20	400011	400107		
KC40T, KC50T, KC65T, KC85T, KC85TS	400107	400213	400223	400229
KCI30GT, KCI30TM	400257	400214	400224	400246
KDI30GX-LP, KDI35GX-LP	400236	400233	400224	400246
KCI75GT	400209	400222		
KDI80GX-LP	400209	400224		
KC200GT, KD205GX-LP, KD210GX-LP	400209	400224		
Mitsubishi				
PV-MFI10EC3, -120EC3	400257	400214	400224	400246
PV-MFI25A2LF, -130EA2LF	400207	400219	400230	
PV-MFI60EB3, -165EB3, -170EB3	400237	400219	400230	

Module make and model	Number of modules to be mounted			
	1	2	3	4
Photowatt				
PW6-110, -123	400257	400214	400224	400246
PW750	400103	400210	400220	400259
PWI650	400210	400226		
Sanyo*				
HPI180BA3, 186BA3, 190BA3, 195BA3, 200BA3	400239	400249		
Schott Solar				
ASE300-DGF/50	400214			
Sharp				
NE-80EJEA	400112	400210	400244	400254
ND-L3EJEA (123w), ND-L5E1U (125w)	400236	400233	400224	400232
ND-N2ECU (142w)	400209	400222		
ND-162U1, ND-167U3A	400209	400222		
NE-170U1	400238	400250	400247	
ND-187U1	400209	400222		
ND-200U1, 208U1	400209	400224		
SolarWorld (Shell)				
80P 85P	400111	400251	400218	400225
165P-PC, 175P-PC **	400238	400250	400247	
SunPower				
SPR90, -95	400111	400251	400218	400225
SPR200BLK, -210, -215BLK, -220	400207	400244	400228	
Suntech				
STP060	400107	400243	400223	400229
Suntech (continued)				
STP085S	400111	400211	400250	400227
STPI10-12/Tb, -115-12/Tc, -120, -130, -140	400235	400253	400258	400261
STPI10-24/Ab	400207	400244	400228	
STPI75-24/Ab-I	400207	400244	400228	
SunWize				
SW50C, -55, -60	400101	400251	400216	400223
SW85, -90, -90C	400204	400212	400222	400259
SW100, -115, -120	400204	400212	400222	400231
SW150	400207	400244	400259	
Uni-Solar				
ES62T	400206	400244	400228	
US64	400207	400215	400226	
Yingli				
YL80, -85	400111	400211	400250	400227

Module sizing continues on page 10

* Use models listed in this row only for Sanyo modules. Top mounting clamp sets are substituted to accommodate Sanyo modules, which have no mounting holes.

**Not compatible with SolarWorld 155, 165 or 175 mono.

Price List: Series 4000
Adjustable Tilt PV PoleSides™



Series 4000
 for 2" (50 mm) Schedule 40 or 80 steel pole, outside dia. 2.375" (60.3 mm)

Item number	Rail/channel length	Module bolt sets	Shipping		List price
			Lbs	Inches	
400002	10"/10"	1	5	11x4x3	\$73.50
400005	12"/15"	1	5	16x4x3	79.00
400006	12"/10"	1	5	13x4x3	75.50
400011	14"/10"	2	5	15x4x3	78.00
400021	20"/25"	1	7	26x4x3	94.00
400024	20"/10"	1	6	22x4x3	84.50
400026	22"/25"	1	7	26x4x3	96.00
400027	22"/15"	2	6	24x4x3	89.50

Price List: Series 4001
Adjustable Tilt PV PoleSides™



Series 4001
 with SolarMount® standard rails for 2½" (65 mm) Schedule 40 or 80 steel pole, outside dia. 2.875" (73.0 mm)

Item number	Rail/channel length	Module bolt sets	Shipping		List price
			Lbs	Inches	
400101	20"/24"	1	6	25x4x3	\$128.00
400103	24"/32"	1	6	33x4x3	137.50
400107	28"/24"	2	8	29x4x3	136.50
400111	22"/24"	1	6	25x4x3	130.00
400112	22"/32"	1	8	33x4x3	135.50

Price List: Series 4002 Adjustable Tilt PV PoleSides™



Series 4002
with SolarMount® standard rails for
2½" (65 mm) Schedule 40 or 80 steel pole,
outside dia. 2.875" (73.0 mm);
3" (80 mm) Schedule 40 or 80 steel pole,
outside dia. 3.500" (88.9 mm);
or 4" (100 mm) Schedule 40 or 80 steel pole,
outside dia. 4.500" (114.3 mm)

Item number	Rail/ channel length	Module bolt sets	Fits Sch 40/80 pole size (in)	Shipping		List price
				Lbs	Inches	
400204	28"/30"	1	2½	12	31x4x4	\$194.00
400206	32"/25"	1	2½	15	33x4x4	196.50
400207	32"/35"	1	2½	16	36x4x4	209.00
400208	40"/25"	2	2½	19	41x4x4	213.50
400209	40"/35"	2	2½	20	41x4x4	226.00
400210	46"/30"	2	2½	21	47x4x4	237.00
400211	44"/25"	2	2½	20	45x4x4	222.00
400212	52"/32"	2	3	21	53x4x4	322.00
400213	52"/24"	2	3	20	53x4x4	309.50
400214	52"/40"	2	3	22	80x4x4	335.00
400215	60"/32"	2	3	24	61x4x4	335.00
400216	60"/24"	3	3	24	61x4x4	322.00
400218	64"/24"	3	3	24	65x4x4	328.50
400219	64"/40"	3	3	25	81x4x4	354.00
400220	68"/32"	3	3	24	69x4x4	347.50
400222	80"/32"	3	4	25	81x4x4	397.00
400223	80"/24"	4	4	25	81x4x4	384.00
400224	80"/40"	3	4	27	81x4x4	409.50
400225	84"/24"	4	4	30	85x4x4	390.50
400226	88"/32"	4	4	26	89x4x4	409.50
400227	88"/24"	4	4	26	89x4x4	397.00

Item number	Rail/ channel length	Module bolt sets	Fits Sch 40/80 pole size (in)	Shipping		List price
				Lbs	Inches	
400228	96"/32"	3	4	27	97x4x4	\$422.50
400229	106"/24"	4	4	30	107x4x4	429.00
400230	96"/40"	3	4	30	97x4x4	435.00
400231	104"/32"	4	4	32	105x4x4	435.00
400232†	108"/40"	4	4	35	109x4x4	461.00
400233	56"/40"	2	3	24	57x4x4	341.50
400235	28"/25"	2	2½	14	29x4x4	187.50
400236	28"/40"	1	2½	15	41x4x4	207.00
400237	32"/40"	1	2½	15	41x4x4	215.50
400238	36"/30"	1	2½	19	37x4x4	211.00
400239*	38"/30"	1*	2½	20	39x4x4	207.00
400242	76"/32"	2	4	30	77x4x4	360.50
400243	54"/24"	2	3	22	55x4x4	315.50
400244	64"/32"	3	3	24	65x4x4	341.50
400245	76"/40"	2	4	29	77x4x4	373.50
400246	104"/40"	4	4	34	105x4x4	448.00
400247	98"/24"	3	4	28	99x4x4	413.00
400248	40"/40"	1	2½	17	41x4x4	232.50
400249*	72"/40"	2*	4	30	73x4x4	367.00
400250	66"/24"	3	3	24	67x4x4	331.50
400251	42"/25"	2	2½	16	43x4x4	217.50
400253	54"/32"	2	3	23	55x4x4	326.50
400254	86"/32"	4	4	30	87x4x4	409.50
400257	26"/35"	1	2½	14	36x4x4	196.50
400258	82"/32"	3	4	29	83x4x4	400.00
400259	92"/32"	4	4	35	93x4x4	416.00
400261†	108"/32"	4	4	38	109x4x5	445.00
400263	36"/24"	2	2½	15	37x4x4	205.00

* For use with Sanyo modules only. Top mounting clamp sets are substituted to accommodate the listed number of Sanyo modules.
† Ships via truck freight only; all others may ship UPS.

U-Bolt Substitution Chart for Alternate Pole Sizes and Wall Mounting

If you plan to mount your rack on a different size pole, use this chart to substitute larger U-bolts. On your order, list the substitution item number and amount. U-bolts up to 13 inches may be special ordered. Smaller-than-standard pole sizes are not recommended, except for Series 4011 and 4012. **For wall mounting**, U-bolts are removed and the dollar values (in parenthesis) are credited. These substitution charges apply to list prices only.

Series & standard Schedule 40/80 pole size	U-bolts	Schedule 40/80 pole size to be substituted				Wall mounting
		1½" (O.D. 1.900") 40 mm (O.D. 48.3 mm)	2½" (O.D. 2.875") 65 mm (O.D. 73.0 mm)	3" (O.D. 3.500") 80 mm (O.D. 88.9 mm)	4" (O.D. 4.500") 100 mm (O.D. 114.3 mm)	
4000 for 2-inch pole	1		990319 \$3.00	990320 \$3.50	990321 \$4.00	990318 (\$ 1.50)
4001 for 2½-inch pole	2			990323 6.00	990324 7.00	990322 (3.00)
4002 for 2½-inch pole	2			990323 6.00	990324 7.00	990322 (3.00)
4002 for 3-inch pole	4				990326 12.00	990325 (8.00)
4002 for 4-inch pole	4					990327 (10.00)
4011 for 2-inch pole	2	990334 \$1.60				
4012 for 2-inch pole	2	990334 1.60				
5000 for 2½-inch pole	2			990323 6.00	990324 7.00	

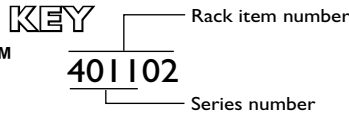
Configurations: Fixed Tilt PV PoleSides™ for One Module



Series 4011
for 2" (50 mm) Schedule 40 or 80 steel pole, outside dia. 2.375" (60.3 mm)



Series 4012
for 2" (50 mm) Schedule 40 or 80 steel pole, outside dia. 2.375" (60.3 mm)



Sizing Chart: Fixed Tilt PV PoleSides™
Select rack based on manufacturer, model number, and tilt angle of the module you plan to mount.

Module make and model	45° tilt	60° tilt	Module make and model	45° tilt	60° tilt
AEE			Mitsubishi		
AE85J	401274	401275	PVMF110EC3, -120EC3	401264	401266
BP Solar			Photowatt		
BPSX5M, -10M	401102		PW750, -1650	401278	401279
BPSX20M, -20U, -30M, -30U	401104		Sharp		
BP350	401274	401275	NE-80EJEA	401274	401275
BP365	401274	401275	ND-L3EJEA (123 watt)	401264	401266
BP380, -485	401274	401275	ND-L5E1U (125 watt)	401264	401266
BP3125	401264	401266	ND-N2ECU (142w)	401278	401279
BP3150, -3160, -4175; BPSX160B, -170B	401276	401277	ND-I62U1, ND-I67U3A	401278	401279
Evergreen			NE-170U1	401276	401277
EC110, -115, -120	401264	401266	ND-187U1	401278	401279
ES170RL, -180RL, -190RL	401278	401279	SolarWorld (Shell)		
GE Energy			80P, 85P	401274	401275
GEPV030	401274	401275	165-P, -PC; 175-P, -PC*	401276	401277
GEPV072, -085	401274	401275	SunPower		
GEPV100, -110	401264	401266	SPR90, -95	401274	401275
GEPVp130	401264	401266	SPR-200-BLK, 210, 215-BLK, 220,	401276	401277
GEPV173	401278	401279	Suntech		
GEPVp185	401278	401279	STP060	401264	401266
GEPV200	401278	401279	STP110-24/Ab	401276	401277
Isofoton			STP175-24/Ab-I	401276	401277
I-150S	401278	401279	SunWize		
IS-150	401276	401277	SW50C, -55, -60	401274	401275
Kyocera			SW85, -90, -90C	401274	401275
KS5	401102		SW100, -115, -120	401264	401266
KS10	401102		SW150	401276	401277
KS20	401102		UniSolar		
KC50T	401260	401262	US64	401276	401277
KC130GT, -130TM	401264	401266	Yingli		
KC175GT	401278	401279	YL80, -85	401274	401275

Price List: Series 4011
Fixed Tilt PV PoleSides™

Model number	Tilt angle	Shipping		List price
		Lbs	Inches	
401102	45°	3	1x4x14	\$35.00
401104	45°	3	1x4x20	45.00

Price List: Series 4012
Fixed Tilt PV PoleSides™

Model number	Tilt angle	Shipping		List price
		Lbs	Inches	
401260	45°	8	3x24x37	\$ 105.50
401262	60°	8	3x19x25	101.50
401264	45°	10	3x28x42	116.50
401266	60°	10	3x28x42	112.00
401274	45°	10	3x24x37	101.50
401275	60°	10	3x24x37	98.00
401276	45°	11	3x28x42	123.50
401277	60°	11	3x28x42	116.50
401278	45°	10	3x24x37	132.50
401279	60°	10	3x24x37	125.00

* Not compatible with SolarWorld 155, 165 or 175 mono.

SPECIALITY RACKS

Sizing Charts & Price Lists

All specialty racks support solar modules in the landscape position. The rail length must exceed the width of your module (or twice the width if you plan to rack two small modules). A second module will require four additional bottom mounting clips.

All racks consist of aluminum structural components and stainless steel module mounting hardware. Fasteners required to secure the racks themselves vary widely and are not included.

For larger ground/roof installations, see our SolarMount® product line.

Price List

Part number	Mount Type	Rail length (in)	Module bolt sets included	Shipping		List price
				wt. (lbs)	dimensions (in)	
Ground/Roof Mounts						
990001	Ground/roof, flush	20	1	6	21 x 4 x 3	\$ 56.50
990002	Ground/roof, fixed tilt legs	20	1	6	21 x 4 x 3	88.00
990003	Ground/roof, flush	24	1	6	24 x 4 x 3	62.00
990004	Ground/roof, fixed tilt legs	24	1	6	24 x 4 x 3	96.50
990005	Ground/roof, flush	28	1	7	28 x 4 x 3	67.50
990006	Ground/roof, fixed tilt legs	28	1	7	28 x 4 x 3	103.50
990007	Ground/roof, flush	32	1	7	32 x 4 x 3	72.00
990008	Ground/roof, fixed tilt legs	32	1	7	32 x 4 x 3	112.00
990026	Ground/roof, flush	40	1	8	40 x 4 x 3	77.50
990027	Ground/roof, fixed tilt legs	40	1	8	40 x 4 x 3	120.50
990028	Ground/roof, flush	44	1	8	44 x 4 x 3	83.00
990029	Ground/roof, fixed tilt legs	44	1	8	44 x 4 x 3	128.50
990030	Ground/roof, flush	16	1	5	17 x 4 x 3	51.50
990031	Ground/roof, fixed tilt legs	16	1	5	17 x 4 x 3	79.50
RV Mounts						
990010	RV rack w/ folding tilt legs	16	1	3	17 x 2 x 2	69.50
990011	RV rack w/ folding tilt legs	20	1	3	21 x 2 x 2	75.50
990012	RV rack w/ folding tilt legs	24	1	3	25 x 2 x 2	81.50
990013	RV rack w/ folding tilt legs	28	1	3	29 x 2 x 2	88.00
990014	RV rack w/ folding tilt legs	32	1	4	33 x 2 x 2	93.50
990016	RV rack w/ folding tilt legs	44	2	5	45 x 2 x 2	113.00
990017	RV rack w/ folding tilt legs	52	2	5	53 x 2 x 2	125.00
990032	RV rack w/ folding tilt legs	40	2	5	41 x 2 x 2	107.00
RV Mounting Feet						
990009	RV mounting feet, set of 4	-	1	2		18.75



RV rack



RV mounting feet

Set of four fits all modules listed on sizing chart.

Complete assembly instructions available at www.unirac.com/technical-support

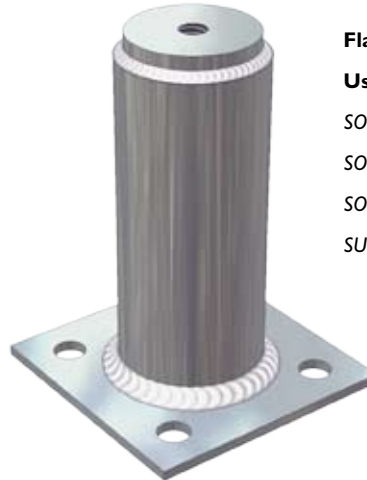
Specialty

ATTACHMENTS

Flat-top one-piece, zinc plated steel standoffs

Shaft outside diameter = 1⁵/₈ inches. Includes s/s hardware and 2 lag bolts. Call Unirac for custom lengths.

Part no.	Size	Quantity	Nominal ship wt. (lbs)	List price
310051	3 in.	12	21	\$213.27
310009	3 in.	1	2	20.00
310052	4 in.	12	23	223.20
310010	4 in.	1	2	21.00
310053	6 in.	12	26	232.29
310011	6 in.	1	2	21.50
310054	7 in.	12	28	255.00
310012	7 in.	1	2	22.00
310451	8 in.	12	21	262.22
310401	8 in.	1	2	22.50
310452	9 in.	12	23	269.44
310402	9 in.	1	2	23.50
310453	10 in.	12	26	277.22
310403	10 in.	1	3	24.00
310454	11 in.	12	28	284.44
310404	11 in.	1	3	24.50
310455	12 in.	12	28	291.67
310405	12 in.	1	3	25.00
990341	Lag bolt removal credit, per standoff			(0.75)



Flat -top one-piece standoff

Use with:

- SOLARMOUNT
- SOLARMOUNT LIGHT
- SOLARMOUNT HEAVY DUTY
- SUNFRAME

Raised flange, zinc plated steel standoffs

Use without L-feet. See also "Flashings for steel standoffs" (p. 51).

Part no.	Description		Nominal ship wt. (lbs)	List price
310047	3 in.	12	16	\$221.00
310017	3 in.	1	2	24.00
310048	4 in.	12	18	244.62
310018	4 in.	1	2	25.00
310049	6 in.	12	22	261.11
310019	6 in.	1	2	25.50
310050	7 in.	12	25	274.43
310020	7 in.	1	2	26.00
310471	8 in.	12	21	281.82
310421	8 in.	1	2	26.50
310472	9 in.	12	23	289.20
310422	9 in.	1	2	27.50
310473	10 in.	12	26	296.02
310423	10 in.	1	3	28.00
310474	11 in.	12	28	303.41
310424	11 in.	1	3	28.50
310475	12 in.	12	28	310.80
310425	12 in.	1	3	29.00
990341	Lag bolt removal credit, per standoff			(0.75)



Raised flange standoff

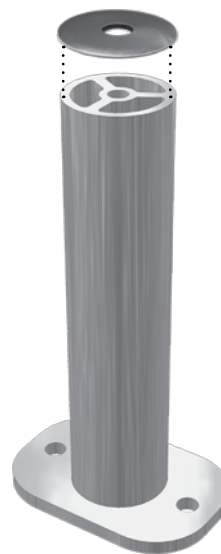
Use with:

- SOLARMOUNT
- SOLARMOUNT LIGHT
- SOLARMOUNT HEAVY DUTY
- SUNFRAME

Flat-top two-piece aluminum standoffs

Shaft outside diameter = 1⁵/₈ inches.
Includes s/s hardware and 2 lag bolts.

Part no.	Size	Quantity	Nominal ship wt. (lbs)	List price
Dark bronze anodized				
310653	3 in.	12	9	\$160.00
310603	3 in.	1	1	15.72
310654	4 in.	12	10	173.00
310604	4 in.	1	1	16.80
310656	6 in.	12	12	197.00
310606	6 in.	1	1	18.86
310657	7 in.	12	13	209.00
310607	7 in.	1	1	20.14
Clear anodized				
310553	3 in.	12	9	153.00
310503	3 in.	1	1	14.64
310554	4 in.	12	10	164.50
310504	4 in.	1	1	15.72
310556	6 in.	12	12	188.50
310506	6 in.	1	1	17.78
310557	7 in.	12	13	201.50
310507	7 in.	1	1	18.86
Credit				
990341	Lag bolt removal credit, per standoff			(0.75)



Flat top two-piece aluminum standoff

Use with:

- SOLARMOUNT
- SOLARMOUNT LIGHT
- SOLARMOUNT HEAVY DUTY
- SUNFRAME

Flashings for all current standoffs

Packages each include 12 flashings. Fits standoff O.D. of 1⁵/₈ inches.

Part no	Description	Nom. ship wt. (lbs)	List price
990101	Galvanized, 12 ¹ / ₂ " x 8 ³ / ₄ " base, No-Calk collar (Oatey # O-11840)	11	\$ 91.00
990102	Aluminum, 12 ¹ / ₂ " x 8 ³ / ₄ " base, No-Calk collar (Oatey # O-12920)	6	132.00
990103	Soft aluminum, 18" x 18" base, No-Calk collar (Oatey # O-12836)	12	188.50



No-Calk® collared flashing

Flashings for other uses*

Packages each include 12 flashings.

Part no.	Description	Nom. ship wt. (lbs)	List price
990109	Galvanized 12 ¹ / ₂ " x 8 ³ / ₄ " base, No-Calk collar (Oatey # O-11830)	11	\$ 103.50

*Note: These flashings will fit Unirac's aluminum standoffs produced prior to 2008. These standoffs had 1 1/8" shafts. The flashings will work with other items with diameters of 1/2" to 1/8"

Flashings

Use with:

- SOLARMOUNT
- SOLARMOUNT LIGHT
- SOLARMOUNT HEAVY DUTY
- SUNFRAME

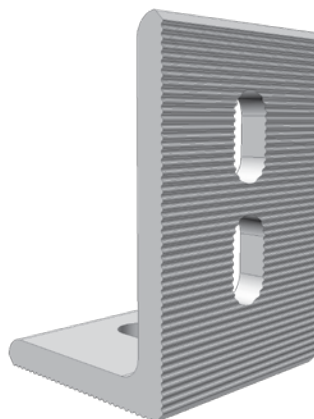
Custom steel standoffs and lag bolt credit

Description	List price
310043 Surcharge for added height, per standoffs, per inch (12 in. max height—steel standoffs only)	\$ 0.53
990341 Lag bolt removal credit, per standoff	(0.75)

Serrated L-feet

Select finish to match rails. Includes s/s bolts and flange nuts. Lag bolts are not included.

Part no.	Description	Nominal shipping weight (lbs)	List price
310065	20 ea., dark bronze	5	\$89.00
310066	1 ea., dark bronze		5.75
310067	20 ea., clear	5	85.00
310068	1 ea., clear		5.50



L-Foot

Use with:

- SOLARMOUNT
- SOLARMOUNT LIGHT
- SOLARMOUNT HEAVY DUTY
- SUNFRAME

Price List: FastFoot, hardware and accessories

Part no.	Description	Nominal ship wt. (lbs)	List price	Part no.	Description	Nominal ship wt. (lbs)	List price
310380	FastFoot 3" Stand Off Assm		\$69.50	990436	Concealor Screw DPI - 6"	5	66.00
310381	FastFoot 4" Stand Off Assm		70.50	990437	Concealor Screw DPI - 7"	5	75.50
310383	FastFoot 6" Stand Off Assm		71.50	DP4 Screws (12 gauge and down, metal)			
310384	FastFoot 7" Stand Off Assm		72.50	25 Pack:			
310390	FastFoot 3" Stand Off Assm 20pk		1,090.00	990400	Concealor Screw DP4 - 1 3/8"	2	13.00
310391	FastFoot 4" Stand Off Assm 20pk		1,101.50	990401	Concealor Screw DP4 - 2 3/4"	2	13.33
310393	FastFoot 6" Stand Off Assm 20pk		1,124.50	990402	Concealor Screw DP4 - 3 3/4"	2	14.93
310394	FastFoot 7" Stand Off Assm 20pk		1,135.50	990403	Concealor Screw DP4 - 4 3/4"	2	17.92
Flashings for FastFoot				990404	Concealor Screw DP4 - 5 3/4"	2	19.41
990120	Galvalume flashing #1	1	6.56	990405	Concealor Screw DP4 - 6 3/4"	2	21.00
990160	Patch, EPDM, Blk	1	3.19	990406	Concealor Screw DP4 - 7 3/4"	2	22.50
990161	Patch, EPDM, Blk, Peel & Stick	1	6.68	100 Pack:			
DPI Screws (14 gauge and down, wood or metal)				990410	Concealor Screw DP4 - 1 3/8"	5	51.50
25 Pack:				990411	Concealor Screw DP4 - 2 3/4"	5	53.50
990420	Concealor Screw DPI - 1 1/2"	2	5.97	990412	Concealor Screw DP4 - 3 3/4"	5	59.50
990421	Concealor Screw DPI - 2"	2	6.61	990413	Concealor Screw DP4 - 4 3/4"	5	71.50
990422	Concealor Screw DPI - 3"	2	8.64	990414	Concealor Screw DP4 - 5 3/4"	5	77.50
990423	Concealor Screw DPI - 4"	2	10.70	990415	Concealor Screw DP4 - 6 3/4"	5	83.00
990424	Concealor Screw DPI - 4 1/2"	2	12.10	990416	Concealor Screw DP4 - 7 3/4"	5	90.50
990425	Concealor Screw DPI - 5"	2	13.50	Accessories			
990426	Concealor Screw DPI - 6"	2	16.50	310440	Anchors #14 - 25 pack	6	16.20
990427	Concealor Screw DPI - 7"	2	18.90	310445	Anchors #14 - 100 pack	22	64.50
100 Pack:				310450	Ferrules #1, 4 ft.	1	22.50
990430	Concealor Screw DPI - 1 1/2"	5	24.00	(FLASHING NOT INCLUDED)			
990431	Concealor Screw DPI - 2"	5	26.50				
990432	Concealor Screw DPI - 3"	5	34.50				
990433	Concealor Screw DPI - 4"	5	42.00				
990434	Concealor Screw DPI - 4 1/2"	5	48.50				
990435	Concealor Screw DPI - 5"	5	54.00				

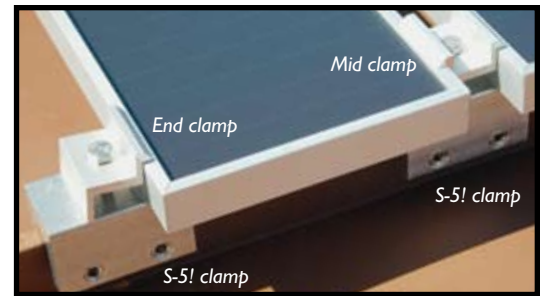
FastFoot

Use with:

- SOLARMOUNT
- SOLARMOUNT LIGHT
- SOLARMOUNT HEAVY DUTY
- SUNFRAME

SolarMount® / S-5!™ PV Clamp Sets

S-5! PV clamps provide non-penetrating attachment points to standing seam metal roofs. Select SolarMount end clamps and mid clamps and attach modules directly to the S-5! clamp without mounting rails. Use end clamps on the edge of the array and mid clamps between rows within the array. End clamps and mid clamps are anodized. S-5! clamps are mill finish.



C for modules 34–36 mm thick

Evergreen (EC), GE Energy, Kyocera, Sharp NE-80EJEA, SolarWorld (<100 watts), Suntech (see p. 5 for specifics), SunWize (<150 watts), Yingli.

	Clear Anodized			Dark Bronze Anodized			Nominal ship wt. (lbs)
	Quantity	Part no.	List price	Quantity	Part no.	List price	
S-5! + Mid Clamp Set	1	321224	\$ 28.50	1	321226	\$ 29.50	1
	20	321236	518.00	20	321238	518.00	10
S-5! + End Clamp Set	1	321228	28.50	1	321232	29.50	1
	20	321240	504.00	20	321244	518.00	10

S-5!

Use with:

- SOLARMOUNT
- SOLARMOUNT LIGHT
- SOLARMOUNT HEAVY DUTY
- SUNFRAME

D for modules 38–40 mm thick

Isofotón, Kaneka, Photowatt PW1650, SolarWorld (>100 watts)

	Clear Anodized			Dark Bronze Anodized			Nominal ship wt. (lbs)
	Quantity	Part no.	List price	Quantity	Part no.	List price	
S-5! + Mid Clamp Set	1	321224	\$ 28.50	1	321226	\$ 29.50	1
	20	321236	518.00	20	321238	518.00	10
S-5! + End Clamp Set	1	321229	28.50	1	321233	29.50	1
	20	321241	504.00	20	321245	518.00	10

E for modules 50–52 mm thick

BP Solar, Schott Solar, Suntech (see p. 5 for specifics)

	Clear Anodized			Dark Bronze Anodized			Nominal ship wt. (lbs)
	Quantity	Part no.	List price	Quantity	Part no.	List price	
S-5! + Mid Clamp Set	1	321225	\$ 28.50	1	321227	\$ 29.50	1
	20	321237	518.00	20	321239	518.00	10
S-5! + End Clamp Set	1	321230	28.50	1	321234	29.50	1
	20	321242	504.00	20	321246	518.00	10

F for modules 45–47 mm thick

Mitsubishi, Sharp (>100 watts, excluding ND-NzECU), SunPower

	Clear Anodized			Dark Bronze Anodized			Nominal ship wt. (lbs)
	Quantity	Part no.	List price	Quantity	Part no.	List price	
S-5! + Mid Clamp Set	1	321225	\$ 28.50	1	321227	\$ 29.50	1
	20	321237	518.00	20	321239	518.00	10
S-5! + End Clamp Set	1	321231	28.50	1	321235	29.50	1
	20	321243	504.00	20	321247	518.00	10

G for Sharp lipped modules
Sharp Solar ND-N2ECU (140W)

	Dark Bronze Anodized			Nominal ship wt. (lbs)
	Quantity	Part no.	List price	
S-5! + Mid Clamp Set	1	321251	\$ 29.50	1
	20	321250	518.00	20
S-5! + End Clamp Set	1	321253	29.50	1
	20	321252	518.00	20

H for Sanyo lipped modules
Sanyo HIP series

	Dark Bronze Anodized			Nominal ship wt. (lbs)
	Quantity	Part no.	List price	
S-5! + Mid Clamp Set (Mid & End are identical)	1	321248	\$ 29.50	1
	20	321249	518.00	10

K for modules 39–41 mm thick
Evergreen (ES series)

	Clear Anodized			Dark Bronze Anodized			Nominal ship wt. (lbs)
	Quantity	Part no.	List price	Quantity	Part no.	List price	
S-5! + Mid Clamp Set	1	321224	\$ 28.50	1	321226	\$ 29.50	1
	20	321236	518.00	20	321238	518.00	10
S-5! + End Clamp Set	1	321268	28.50	1	321270	29.50	1
	20	321269	504.00	20	321271	518.00	10

For mounting modules with rails

Includes 3/8-inch hardware to fasten L-foot to clamp and rail (not included) to L-foot.

	Clear Anodized			Dark Bronze Anodized			Nominal ship wt. (lbs)
	Quantity	Part no.	List price	Quantity	Part no.	List price	
S-5! with L-foot	1	321255	\$ 34.50	1	321257	\$ 36.00	1
	20	321256	635.00	20	321258	642.50	10

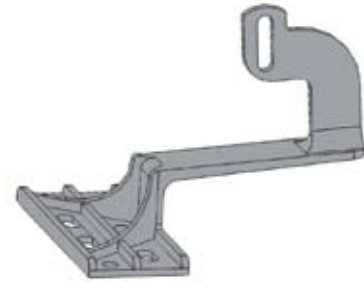
SOLARMOUNT & SUNFRAME

Creotecc Roof Tile Hook

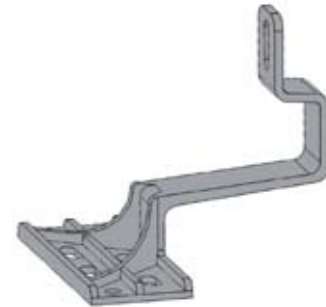
Creotecc roof tile hooks come in three different mount types. Front mount, side mount and top mount. Tile hooks can be used with any standard racking system. For use with concrete tile or spanish tile roofs.

Creotecc Roof Tile Hook

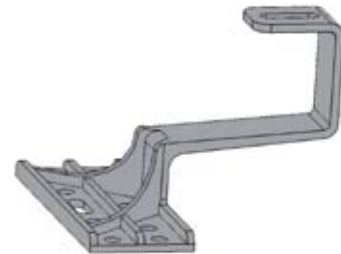
Part No.	Description	Pack Qty.	List price
905011C-0024	RH - Front Mount Tile Hook	24	\$778.00
905012C-0024	RH - Side Mount Tile Hook	24	\$778.00
905013C-0024	RH - Top Mount Tile Hook	24	\$778.00



RoofTile Hook Side Mount



RoofTile Hook Front Mount



RoofTile Hook Top Mount